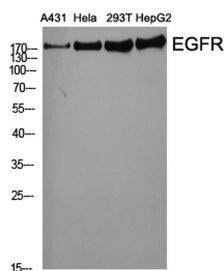
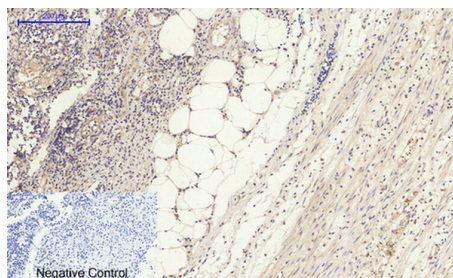


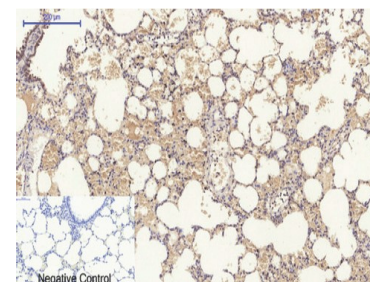
Cat. No:	AB-84336
Size:	100 ug
Clone:	POLY
Concentration:	1mg/ml
Host:	Rb
Isotype:	IgG
Immunogen:	Synthesized peptide derived from human EGFR around the non-phosphorylation site of Y1016.
Reactivity:	Hu, Ms, Rt
Applications:	Western Blot: 1:500-1:2000 Immunohistochemistry: 1:100-1:300 Immunofluorescence: 1:200-1:1000 ELISA: 1:5000
Purification:	The antibody was affinity-purified from rabbit antiserum by affinity-chromatography using a epitope-specific immunogen.
Background:	EGFR polyclonal antibody detects endogenous levels of EGFR protein.
Form:	Liquid
Buffer:	Liquid in PBS containing 50% glycerol, 0.5% BSA and 0.02% sodium azide.
Storage:	Store at -20°C, and avoid repeat freeze-thaw cycles.



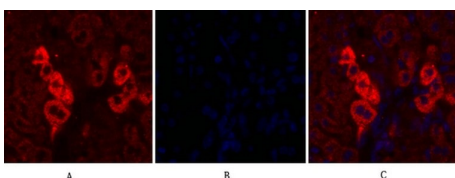
Western Blot analysis of various cell using EGFR antibody at dilution of 1:2000



Immunohistochemical analysis of paraffin-embedded Human- Appendix tissue. 1, EGFR Polyclonal Antibody was diluted at 1:200 (4°C, overnight). 2, Sodium citrate pH 6.0 was used for antibody retrieval (>98°C, 20min). 3, Secondary antibody was diluted at 1:200 (room temperature, 30min). Negative control was used by secondary antibody only.



Immunohistochemical analysis of paraffin-embedded Rat-lung tissue. 1, EGFR Polyclonal Antibody was diluted at 1:200 (4°C, overnight). 2, Sodium citrate pH 6.0 was used for antibody retrieval (>98°C, 20min). 3, Secondary antibody was diluted at 1:200 (room temperature, 30min). Negative control was used by secondary antibody only.



Immunofluorescence analysis of mouse-

liver tissue.

1, EGFR Polyclonal antibody (red) was diluted at 1:200 (+4°C), overnight). 2, Cy3 labeled Secondary antibody was diluted at 1:300 (room temperature, 50min) 3, Picture B: DAPI (Blue) 10 min.

Picture A: Target

Picture B: DAPI

Picture C: merge A+B

**For Research use only
IMMUNOLOGICAL SCIENCES**