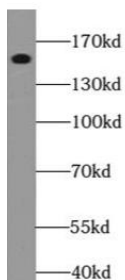
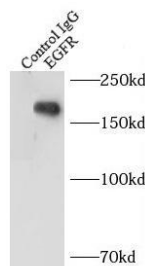


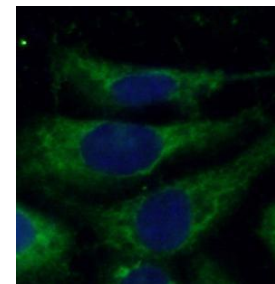
Cat. No:	AB-84341
Size:	100 ug
Clone:	POLY
Concentration:	1mg/ml
Host:	Rb
Isotype:	IgG
Immunogen:	epidermal growth factor receptor
Reactivity:	Hu, Ms, Rt
Applications:	Western Blot: 1:2000-1:4000 Immunoprecipitation: 1:500-1:1000 Immunohistochemistry: 1:200-1:800 Immunofluorescence: 1:50-1:500
Molecular Weight:	150kDa
Purification:	Aff. Pur. ≥95% as determined by SDS-PAGE
Synonyms:	ERBB, ERBB1, HER1
Form:	Liquid
Buffer:	PBS with 0.02% sodium azide and 50% glycerol pH 7.3
Storage:	T -20°C for 12 months (Avoid repeated freeze / thaw cycles.)



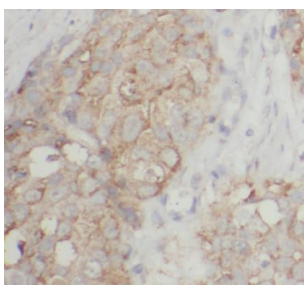
L02 cells were subjected to SDS PAGE followed by western blot with (EGFR-Specific antibody) at dilution of 1:2000



IP Result of anti-EGFR-Specific (IP: 3ug; Detection:1:500) with MCF-7 cells lysate 2500ug.



Immunofluorescent analysis of A431 cells using (EGFR-Specific antibody) at dilution of 1:50 and Alexa Fluor 488-conjugated Goat Anti-Rabbit IgG(H+L)



Immunohistochemistry of paraffin-embedded human breast cancer tissue slide using

(EGFR-Specific antibody) at dilution of
1:400

**For Research use only
IMMUNOLOGICAL SCIENCES**