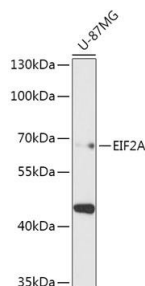


Cat. No:	AB-84175
Size:	100 ug
Clone:	POLY
Concentration:	1mg/ml
Host:	Rb
Isotype:	igG
Immunogen:	A synthetic peptide of human EIF2A
Reactivity:	Hu, Ms
Applications:	Western Blot: 1:1000
Molecular Weight:	65kDa
Purification:	Aff. Pur.
Synonyms:	EIF2A; CDA02; EIF-2A; MST089; MSTP004; MSTP089; eukaryotic translation initiation factor 2A.

Background: This gene encodes a eukaryotic translation initiation factor that catalyzes the formation of puromycin-sensitive 80 S preinitiation complexes and the poly(U)-directed synthesis of polyphenylalanine at low concentrations of Mg²⁺. This gene should not be confused with eIF2-alpha (EIF2S1, Gene ID: 1965), the alpha subunit of the eIF2 translation initiation complex. Although both of these proteins function in binding initiator tRNA to the 40 S ribosomal subunit, the encoded protein does so in a codon-dependent manner, whereas eIF2 complex requires GTP. Alternative splicing of this gene results in multiple transcript variants encoding different isoforms.

Form:	Liquid
Buffer:	PBS with 0.02% sodium azide,50% glycerol,pH7.3
Storage:	Store at -20°C, and avoid repeat freeze-thaw cycles.



Western blot analysis of extracts of U-87MG cells, using EIF2A antibody at 1:1000 dilution.

Secondary antibody: HRP Goat Anti-Rabbit IgG (H+L) at 1:10000 dilution.

Lysates/proteins: 25ug per lane.
Blocking buffer: 3% nonfat dry milk in TBST.

Detection: ECL Basic Kit.

Exposure time: 90s.

**For Research use only
IMMUNOLOGICAL SCIENCES**