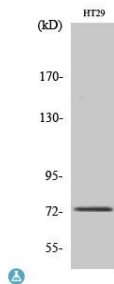


Cat. No:	MAB-94614
Size:	100ug
Clone:	EPR19012
Concentration:	1mg/ml
Host:	Rb
Isotype:	IgG
Immunogen:	Synthesized peptide derived from human EOMES. Immunogen Region: N-terminal
Reactivity:	Hu, Ms
Applications:	Western Blot: 1:500-1:2000 ELISA: 1:10000
Molecular Weight:	73kDa
Purification:	The antibody was affinity-purified from rabbit antiserum by affinitychromatography using epitope-specific immunogen.
Synonyms:	Eomesodermin homolog T-box brain protein 2 T-brain-2 TBR-2
Background:	Specificity: EOMES polyclonal antibody detects endogenous levels of EOMES protein. Tissue Specificity: Expressed in CD8+ T-cells.
Form:	Liquid
Buffer:	Liquid in PBS containing 50% glycerol, 0.5% BSA and 0.02% sodium azide.
Storage:	At -20°C for one year. Avoid repeated freezing and thawing.



Western Blot (WB) analysis
of specific cells using
EOMES polyclonal antibody.

**For Research use only
IMMUNOLOGICAL SCIENCES**