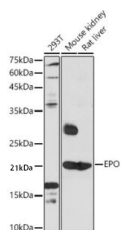
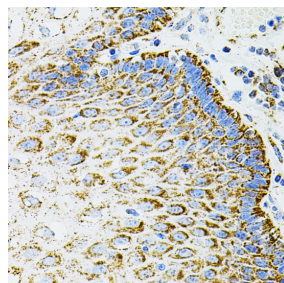


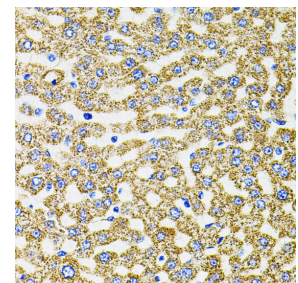
Cat. No:	AB-81525
Conjugate:	Unconjugated
Size:	100µg
Clone:	POLY
Concentration:	1mg/ml
Host:	Rabbit
Isotype:	IgG
Immunogen:	A synthetic peptide corresponding to a sequence within amino acids 100-193 of human EPO
Reactivity:	Human, Mouse, Rat Western Blot: 1:500 - 1:1000 Immunohistochemistry: 1:100 - 1:200 Immunofluorescence: 1:50 - 1:200 Immunocytochemistry: 1:50 - 1:200
Applications:	
Molecular Weight:	21kDa
Purification:	Aff. Pur.
Synonyms:	EPO;EP;MVCD2
Background:	This gene is a member of the EPO/TPO family and encodes a secreted, glycosylated cytokine composed of four alpha helical bundles. The protein is found in the plasma and regulates red cell production by promoting erythroid differentiation and initiating hemoglobin synthesis. This protein also has neuroprotective activity against a variety of potential brain injuries and antiapoptotic functions in several tissue types.
Form:	Liquid
Buffer:	Liquid in PBS containing 50% glycerol, 0.5% BSA and 0.02% sodium azide.
Storage:	Store at -20°C. Avoid freeze / thaw cycles.



Western blot analysis of extracts of various cell lines, using EPO antibody at 1:1000 dilution.
Secondary antibody: HRP Goat Anti-Rabbit IgG (H+L) at 1:10000 dilution.
Lysates/proteins: 25ug per lane.
Blocking buffer: 3% nonfat dry milk in TBST.
Detection: ECL West Pico Plus.

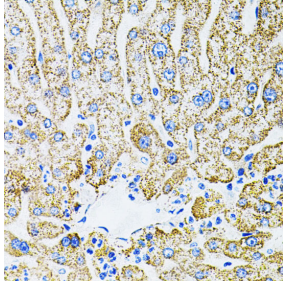


Immunohistochemistry of paraffinembedded human esophagus using EPO antibody (40x lens). Perform microwave antigen retrieval with 10 mM PBS buffer pH 7.2 before commencing with IHC staining protocol.

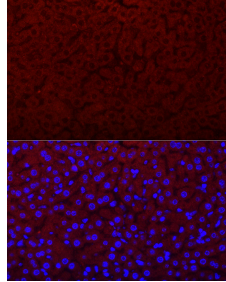


Immunohistochemistry of paraffinembedded rat liver using EPO antibody (40x lens). Perform microwave antigen retrieval with 10 mM PBS buffer pH 7.2 before commencing with IHC staining protocol.

Exposure time: 60s.



Immunohistochemistry of paraffinembedded human liver damage using EPO antibody (40x lens). Perform microwave antigen retrieval with 10 mM PBS buffer pH 7.2 before commencing with IHC staining protocol.



Immunofluorescence analysis of mouse liver cells using EPO Rabbit pAb at dilution of 1:200 (40x lens). Blue: DAPI for nuclear staining.

References:

References for EPO Rabbit pAb

Product:EPO Rabbit pAb

Journal:Journal of Cardiovascular pharmacology

Application:WB

IF:3.105

Species:Rattus norvegicus

PMID:29438215

Title:Rutaecarpine Suppresses Proliferation and Promotes Apoptosis of Human Pulmonary ArterySmooth Muscle Cells in Hypoxia Possibly Through HIF-1 α -Dependent Pathways.

References:

References for EPO Rabbit pAb

Product:EPO Rabbit pAb

Journal:Toxicol Lett

Application:WB

IF:4.372

Species:Rattus norvegicus

PMID:32461003

Title:Differential susceptibility of PC12 and BRL cells and the regulatory role of HIF-1 α signaling pathway in response to acute methylmercury exposure under normoxia

**For Research use only
IMMUNOLOGICAL SCIENCES**