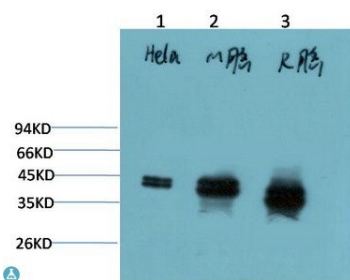
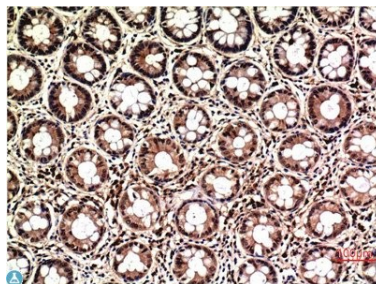


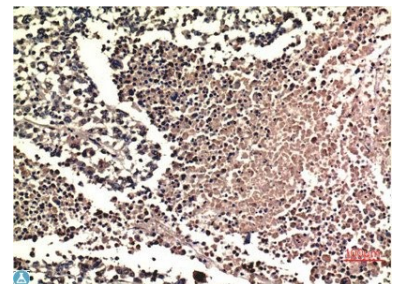
<b>Cat. No:</b>	MAB-94577
<b>Size:</b>	100 ug
<b>Clone:</b>	1H4
<b>Concentration:</b>	1mg/ml
<b>Host:</b>	Ms
<b>Isotype:</b>	IgG1
<b>Immunogen:</b>	synthetic peptide derived from ERK1/2
<b>Reactivity:</b>	Hu, Ms, Rt
<b>Applications:</b>	Western Blot: 1:1000-2000 Immunohistochemistry: 1:100-200
<b>Purification:</b>	The antibody was affinity-purified from mouse ascites by affinity chromatography using specific immunogen
<b>Synonyms:</b>	Mitogen-activated protein kinase 3 MAP kinase 3 MAPK 3 ERT2 Extracellular signal-regulated kinase 1 ERK-1 Insulin-stimulated MAP2 kinase MAP kinase isoform p44 p44-MAPK Microtubule-associated protein 2.
<b>Background:</b>	RK1/2 Mouse Monoclonal Antibody (1H4) detects endogenous levels of MAPK1/MAPK3
<b>Form:</b>	Liquid
<b>Buffer:</b>	Liquid in PBS containing 50% glycerol, 0.5% BSA and 0.02% sodium azide.
<b>Storage:</b>	Store at -20°C, and avoid repeat freeze-thaw cycles.



Western Blot (WB) analysis of 1) HeLa Cell Lysate, 2) Mouse Brain Tissue Lysate, 3) Rat Brain Tissue Lysate using ERK1/2 Mouse Monoclonal Antibody diluted at 1:2000.



Immunohistochemistry (IHC) analysis of paraffin-embedded Human Lung Carcinoma Tissue using ERK1/2 Mouse Monoclonal Antibody diluted at 1:200.



Immunohistochemistry (IHC) analysis of paraffin-embedded Human Colon Carcinoma Tissue using ERK1/2 Mouse Monoclonal Antibody diluted at 1:200.

**For Research use only  
IMMUNOLOGICAL SCIENCES**