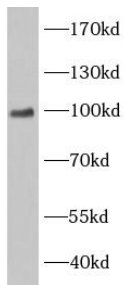
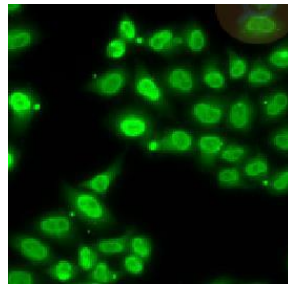


Cat. No:	AB-84170
Size:	100 ug
Clone:	POLY
Concentration:	1mg/ml
Host:	Rb
Isotype:	IgG
Immunogen:	Ewing sarcoma breakpoint region 1
Reactivity:	Hu, Ms
Applications:	Western Blot: 1:500-1:2000 Immunofluorescence: 1:50-1:200
Molecular Weight:	37kDa/68kDa/100kDa
Purification:	≥95% as determined by SDS-PAGE
Synonyms:	EWS, EWS oncogene, EWSR1, RNA binding protein EWS
Background:	Human, Mouse; other species are not tested. Please decide the specificity by homology
Form:	Liquid
Buffer:	PBS with 0.02% sodium azide and 50% glycerol pH 7.3
Storage:	T -20°C for 24 months (Avoid repeated freeze / thaw cycles.)



mouse spleen were subjected to SDS PAGE followed by western blot with (EWSR1 antibody) at dilution of 1:1000



Immunofluorescent analysis of U2OS cells using (EWSR1 antibody) at dilution of 1:100

**For Research use only
IMMUNOLOGICAL SCIENCES**