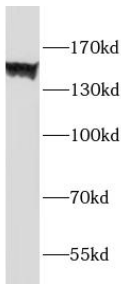
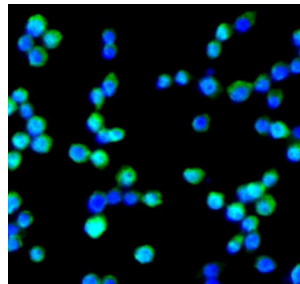


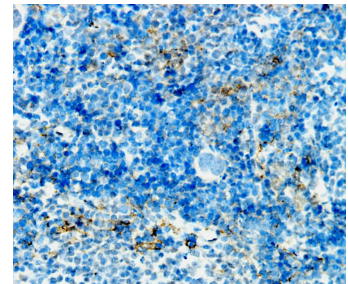
<b>Cat. No:</b>	AB-84162
<b>Conjugate:</b>	Unconjugated
<b>Size:</b>	100 ug
<b>Clone:</b>	Poly
<b>Concentration:</b>	1mg/ml
<b>Host:</b>	Rabbit
<b>Isotype:</b>	IgG
<b>Immunogen:</b>	EGF-like module containing, mucin-like, hormone receptor-like sequence 1
<b>Reactivity:</b>	Human, Mouse, Rat
<b>Applications:</b>	Western Blot: 1:500-1:1000 Immunohistochemistry: 1:20-1:200 Immunofluorescence: 1:50-1:500
<b>Molecular Weight:</b>	160 kDa
<b>Purification:</b>	Immunogen affinity purified
<b>Synonyms:</b>	ADGRE1, Adhesion G protein-coupled receptor E1, EGF like module receptor 1, EMR1, EMR1 hormone receptor, F4/80, TM7LN3
<b>Form:</b>	Liquid
<b>Buffer:</b>	PBS with 0.02% sodium azide and 50% glycerol pH 7.3
<b>Storage:</b>	Store at -20°C for 12 months (Avoid repeated freeze / thaw cycles.)



HL-60 cells were subjected to SDS PAGE followed by western blot with F4/80 Antibody at dilution of 1:1000



Immunofluorescent analysis of ( 10% Formaldehyde ) fixed Raw264.7 cells using F4/80 antibody at dilution of 1:50 and FITC-conjugated Goat Anti-Rabbit IgG(H+L)



Immunohistochemistry of paraffin-embedded mouse spleen tissue slide using F4/80 Antibody at dilution of 1:200

**For Research use only  
IMMUNOLOGICAL SCIENCES**