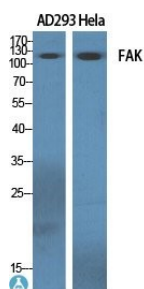
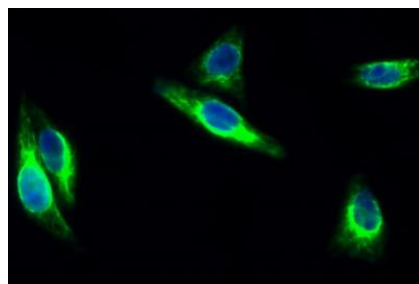


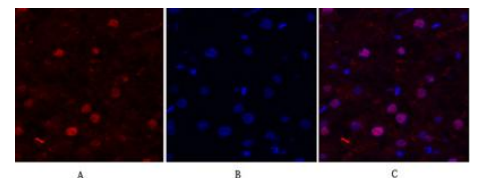
<b>Cat. No:</b>	AB-84279
<b>Conjugate:</b>	Unconjugated
<b>Size:</b>	100 ug
<b>Clone:</b>	POLY
<b>Concentration:</b>	1mg/ml
<b>Host:</b>	Rabbit
<b>Isotype:</b>	IgG
<b>Immunogen:</b>	The antiserum was produced against synthesized peptide derived from human FAK. AA range:809-858
<b>Reactivity:</b>	Human;Mouse;Rat
<b>Applications:</b>	Western Blot: 1/500 - 1/2000. Immunofluorescence: 1:50-200 Immunohistochemistry: 1/100 - 1/300.
<b>Molecular Weight:</b>	120 kDa
<b>Purification:</b>	The antibody was affinity-purified from rabbit antiserum by affinity-chromatography using epitope-specific immunogen.
<b>Synonyms:</b>	PTK2; FAK; FAK1; Focal adhesion kinase 1; FADK 1; Focal adhesion kinase-related nonkinase; FRNK;Protein phosphatase 1 regulatory subunit 71; PPP1R71; Protein-tyrosine kinase 2; p125FAK; pp125FAK
<b>Background:</b>	protein tyrosine kinase 2(PTK2) Homo sapiens This gene encodes a cytoplasmic protein tyrosine kinase which is found concentrated in the focal adhesions that form between cells growing in the presence of extracellular matrix constituents. The encoded protein is a member of the FAK subfamily of protein tyrosine kinases but lacks significant sequence similarity to kinases from other subfamilies. Activation of this gene may be an important early step in cell growth and intracellular signal transduction pathways triggered in response to certain neural peptides or to cell interactions with the extracellular matrix. Several transcript variants encoding different isoforms have been found for this gene, but the full-length natures of only four of them have been determined.
<b>Form:</b>	Liquid
<b>Buffer:</b>	Liquid in PBS containing 50% glycerol, 0.5% BSA and 0.02% sodium azide.
<b>Storage:</b>	Store at -20°C. Avoid freeze / thaw cycles.



Western Blot (WB) analysis of specific cells using FAK polyclonal antibody.



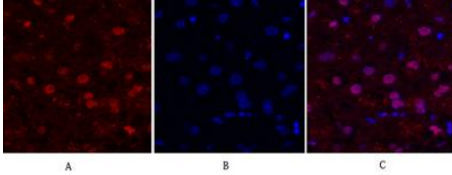
Immunofluorescence analysis of HeLa cell. 1,FAKPolyclonal Antibody(green)



Immunofluorescence analysis of human-liver tissue. 1,FAKPolyclonal Antibody(red) was diluted at 1:200(4°C,overnight). 2, Cy3 labeled Secondary antibody was diluted at 1:300(room temperature, 50min).3,

was diluted at 1:200(4°overnight). 2,  
Goat Anti Rabbit Alexa Fluor 488  
was diluted at 1:1000(room  
temperature, 50min). 3 DAPI(blue)  
10min.

PictureB: DAPI(blue) 10min. Picture  
A:Target. Picture B: DAPI. Picture C:  
merge of A+B



Immunofluorescence analysis of human-  
liver tissue. 1,FAKPolyclonal  
Antibody(red) was diluted  
at1:200(4°C,overnight). 2, Cy3 labled  
Secondary antibody  
was diluted at 1:300(room temperature,  
50min).3, Picture B: DAPI(blue) 10min.  
Picture A:Target. Picture