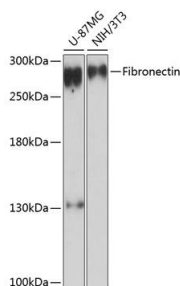
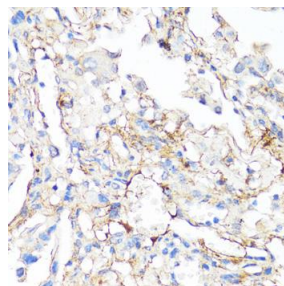


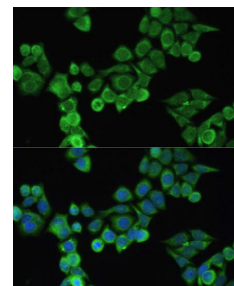
<b>Cat. No:</b>	AB-84019
<b>Size:</b>	100 ug
<b>Clone:</b>	POLY
<b>Concentration:</b>	1mg/ml
<b>Host:</b>	Rb
<b>Isotype:</b>	IgG
<b>Immunogen:</b>	Recombinant fusion protein containing a sequence corresponding to amino acids 2200-2355 of human Fibronectin).
<b>Reactivity:</b>	Hu, Ms
<b>Applications:</b>	Western Blot: 1:500 -1:1000 Immunohistochemistry: 1:50 1:200 Immunofluorescence: 1:50 - 1:200
<b>Molecular Weight:</b>	290kDa
<b>Purification:</b>	Aff. Pur.
<b>Synonyms:</b>	FN1; CIG; ED-B; FINC; FN; FNZ; GFND; GFND2; LETS; MSF; fibronectin
<b>Background:</b>	This gene encodes fibronectin, a glycoprotein present in a soluble dimeric form in plasma, and in a dimeric or multimeric form at the cell surface and in extracellular matrix. The encoded preproprotein is proteolytically processed to generate the mature protein. Fibronectin is involved in cell adhesion and migration processes including embryogenesis, wound healing, blood coagulation, host defense, and metastasis. The gene has three regions subject to alternative splicing, with the potential to produce 20 different transcript variants, at least one of which encodes an isoform that undergoes proteolytic processing. The full-length nature of some variants has not been determined.
<b>Form:</b>	Liquid
<b>Buffer:</b>	PBS with 0.02% sodium azide,50% glycerol,pH7.3.
<b>Storage:</b>	Store at -20°C. Avoid freeze / thaw cycles.



Western blot analysis of extracts of various cell lines, using Fibronectin antibody at 1:3000 dilution.  
Secondary antibody: HRP Goat Anti-Rabbit IgG (H+L) at 1:10000 dilution.  
Lysates/proteins: 25ug per lane.  
Blocking buffer: 3% nonfat dry milk in TBST.  
Detection: ECL Basic Kit

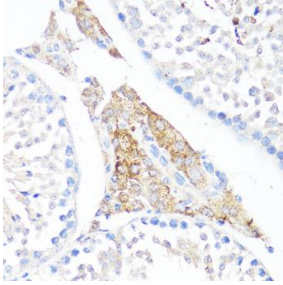


Immunohistochemistry of paraffin-embedded human lung cancer using Fibronectin antibody at dilution of 1:100 (40x lens).



Immunohistochemistry of paraffin-embedded mouse testis leydig using Fibronectin antibody at dilution of 1:100 (40x lens).

Exposure time: 90s.



Immunofluorescence analysis of HeLa cells using Fibronectin antibody at dilution of 1:100. Blue: DAPI for nuclear staining.

**For Research use only  
IMMUNOLOGICAL SCIENCES**