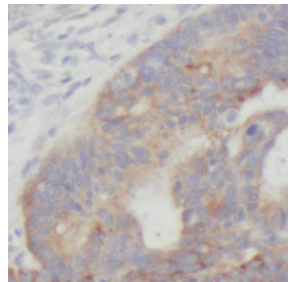


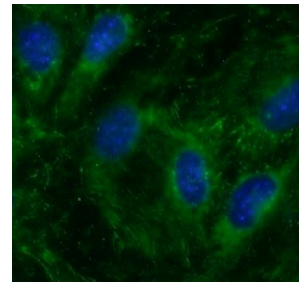
Cat. No:	AB-84733
Conjugate:	Unconjugated
Size:	100 ug
Clone:	POLY
Concentration:	1mg/ml
Host:	Rabbit
Isotype:	IgG
Immunogen:	fibronectin 1
Reactivity:	Human, Mouse, Rat
Applications:	Western Blot: 1:200-1:5000 Immunofluorescence: 1:50-1:200
Molecular Weight:	260 kDa
Purification:	Immunogen affinity purified
Synonyms:	CIG, Cold insoluble globulin, DKFZp686F10164, DKFZp686H0342, DKFZp686I1370, DKFZp686O13149, ED B, Fibronectin, fibronectin 1, FINC, FN, FN1, FNZ, GFND, GFND2, LETS, MSF
Background:	Background Fibronectin 1(FN1) is a high molecular weight glycoprotein which exists in both a soluble form in plasma(plasma FN1) and other body fluids and an insoluble form in the extracellular matrix(cellular FN1). Plasma FN1(dimeric form) is secreted by hepatocytes. Cellular FN(dimeric or cross-linked multimeric forms), made by fibroblasts, epithelial and other cell types, is deposited as fibrils in the extracellular matrix. FN1 binds to cell surfaces through integrins and to various compounds including collagen, fibrin and heparin. It is involved in cell adhesion and migration processes including embryogenesis, wound healing, hemostasis, host defense, and metastasis.
Form:	Liquid
Buffer:	PBS with 0.02% sodium azide and 50% glycerol pH 7.3
Storage:	-20°C for 12 months (Avoid repeated freeze / thaw cycles.)



U-87MG cells were subjected to SDS PAGE followed by western blot with Fibronectin antibody at dilution of 1:2000



Immunohistochemistry of paraffin-embedded human colon cancer using Fibronectin antibody at dilution of 1:50



Immunofluorescence using Fibronectin Polyclonal antibody

**For Research use only
IMMUNOLOGICAL SCIENCES**