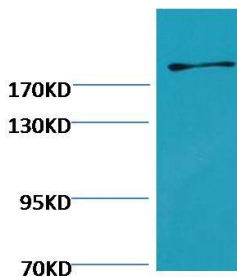


Cat. No:	MAB-94751
Conjugate:	Unconjugated
Size:	100 ug
Clone:	F03
Concentration:	1mg/ml
Host:	Mouse
Isotype:	IgG1
Immunogen:	Synthetic Peptide
Reactivity:	Human
Applications:	WesternBlot: 1:1000-1:2000 Immunohistochemistry:1:200-1:500
Molecular Weight:	285kDa
Purification:	Purified
Synonyms:	CIG Cold insoluble globulin fibronectin FN fN1 FNZ GFND GFND2 Ugl-Y3

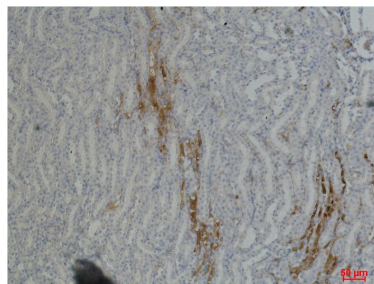
Background:

Fibronectin is a high-molecular weight glycoprotein of the extracellular matrix that binds to membrane-spanning receptor proteins called integrins. Similar to integrins fibronectin binds extracellular matrix components such as collagen. Fibronectin exists as a protein dimer consisting of two nearly identical monomers linked by a pair of disulfide bonds. The fibronectin protein is produced from a single gene but alternative splicing of its premRNA leads to the creation of several isoforms.

Form:	Liquid
Buffer:	PBS with 0.02% sodium azide and 50% glycerol pH 7.4.
Storage:	Store at -20°C. Avoid repeated freeze-thaw cycles.



Western blot analysis of HeLa with EM1137 diluted at:2000.



Immunohistochemical analysis of paraffin-embedded Mouse Kidney Tissue using Fibronectin Rabbit pAb diluted at:500.

**For Research use only
IMMUNOLOGICAL SCIENCES**