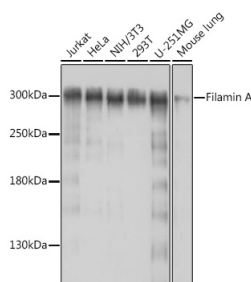


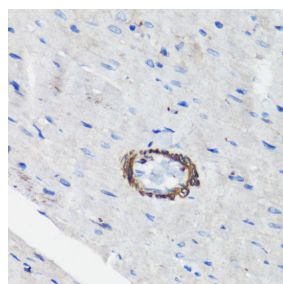
Cat. No:	MAB-94782
Conjugate:	Unconjugated
Size:	100 ug
Clone:	PMS/317
Concentration:	1mg/ml
Host:	Rabbit
Isotype:	IgG
Immunogen:	Recombinant fusion protein containing a sequence corresponding to amino acids 2348-2647 of human Filamin A
Reactivity:	Human, Mouse, Rat
Applications:	Western Blot: 1:500 - 1:2000 Immunohistochemistry (paraffin-embedded tissues): 1:50 - 1:200 Immunofluorescence: 1:50 - 1:200 Immunocytochemistry: 1:50 - 1:200
Molecular Weight:	300kDa
Purification:	Affinity purification
Synonyms:	FLN; FMD; MNS; OPD; ABPX; CSBS; CVD1; FGS2; FLN1; NHBP; OPD1; OPD2; XLVD; XMVD; FLN-A; ABP-280

Background: The protein encoded by this gene is an actin-binding protein that crosslinks actin filaments and links actin filaments to membrane glycoproteins. The encoded protein is involved in remodeling the cytoskeleton to effect changes in cell shape and migration. This protein interacts with integrins, transmembrane receptor complexes, and second messengers. Defects in this gene are a cause of several syndromes, including periventricular nodular heterotopias (PVNH1, PVNH4), otopalatodigital syndromes (OPD1, OPD2), frontometaphyseal dysplasia (FMD), Melnick-Needles syndrome (MNS), and X-linked congenital idiopathic intestinal pseudoobstruction (CIIPX). Two transcript variants encoding different isoforms have been found for this gene.

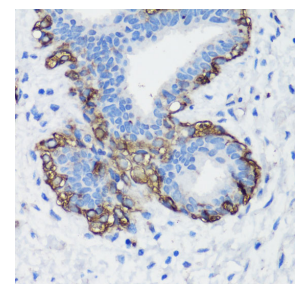
Form:	Liquid
Buffer:	PBS with 0.02% sodium azide, 50% glycerol, pH 7.3.
Storage:	Store at -20°C. Avoid freeze / thaw cycles.



Western blot analysis of extracts of various cell lines, using Filamin A antibody at 1:1000

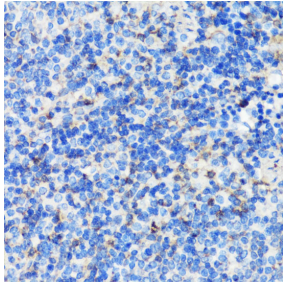


Immunohistochemistry analysis of paraffin-embedded rat heart using Filamin A antibody at dilution of 1:100



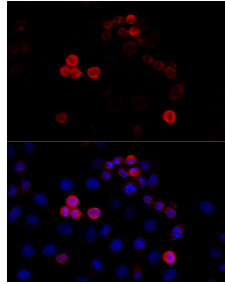
Immunohistochemistry analysis of paraffin-embedded human breast cancer using Filamin A antibody at dilution of 1:100

dilution.
Secondary antibody: HRP Goat Anti-Rabbit IgG (H+L) at 1:10000 dilution.
Lysates/proteins: 25µg per lane.
Blocking buffer: 3% nonfat dry milk in TBST.
Detection: ECL West Pico Plus.
Exposure time: 30s.



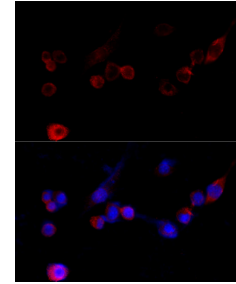
Immunohistochemistry analysis of paraffin-embedded mouse spleen using Filamin A antibody at dilution of 1:100 (40x lens). Perform microwave antigen retrieval with 10 mM PBS buffer pH 7.2 before commencing with IHC staining protocol.

(40x lens). Perform microwave antigen retrieval with 10 mM PBS buffer pH 7.2 before commencing with IHC staining protocol.

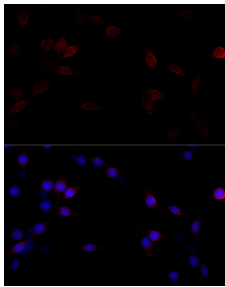


Immunofluorescence analysis of HeLa cells using Filamin A antibody at dilution of 1:100 (40x lens).
Blue: DAPI for nuclear staining.

1:100 (40x lens). Perform microwave antigen retrieval with 10 mM PBS buffer pH 7.2 before commencing with IHC staining protocol.



Immunofluorescence analysis of NIH/3T3 cells using Filamin A antibody at dilution of 1:100 (40x lens).
Blue: DAPI for nuclear staining.



Immunofluorescence analysis of PC-12 cells using Filamin A antibody at dilution of 1:100 (40x lens).
Blue: DAPI for nuclear staining.

References:

Product: Filamin A Rabbit mAb

Journal: Frontiers in oncology

Application: WB, IF

IF: 5.73

Species: Homo sapiens

PMID: 37274283

Title: Screening of immunotherapy-related genes in bladder cancer based on GEO datasets – PMC

**For Research use only
IMMUNOLOGICAL SCIENCES**