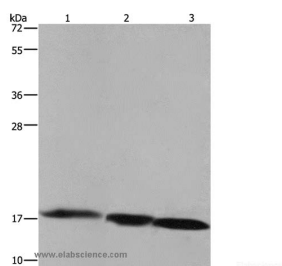


Cat. No:	AB-84484
Conjugate:	Unconjugated
Size:	100 ug
Clone:	POLY
Concentration:	1mg/ml
Host:	Rabbit
Isotype:	IgG
Immunogen:	Recombinant protein of human FIS1
Reactivity:	Human,Mouse,Rat
Applications:	Western Blot: 1:500-1:2000
Molecular Weight:	17kDa
Purification:	Affinity purification
Background:	The balance between fission and fusion regulates the morphology of mitochondria. TTC11 is a component of a mitochondrial complex that promotes mitochondrial fission.
Form:	Liquid
Buffer:	PBS with 0.05% sodium azide and 50% glycerol, PH7.4
Storage:	Store at -20°C. Avoid freeze / thaw cycles.



Western Blot analysis of Raji cell, Mouse liver and heart tissue using FIS1 Polyclonal Antibody at dilution of 1:500

**For Research use only
IMMUNOLOGICAL SCIENCES**