

Cat. No:	AB-82717
Conjugate:	Unconjugated
Size:	100 ug
Clone:	POLY
Concentration:	1mg/ml
Host:	Rb
Isotype:	IgG
Immunogen:	A synthetic peptide of human FOXO1
Reactivity:	Hu, Ms, Rt
Applications:	Western Blot: 1:500 - 1:1000 Immunofluorescence: 1:50 - 1:100
Molecular Weight:	85kDa
Purification:	Aff. Pur.
Synonyms:	FOXO1; FKX1; FKXR; FOXO1A; forkhead box O1

Background:

This gene belongs to the forkhead family of transcription factors which are characterized by a distinct forkhead domain. The specific function of this gene has not yet been determined; however, it may play a role in myogenic growth and differentiation. Translocation of this gene with PAX3 has been associated with alveolar rhabdomyosarcoma.

Form:

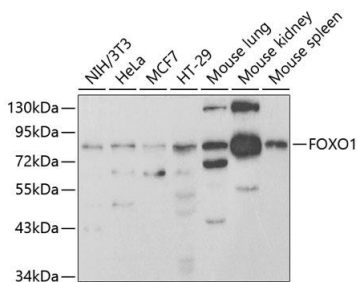
Liquid

Buffer:

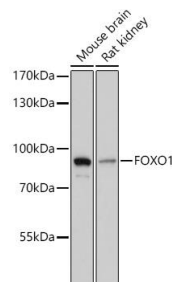
PBS with 0.02% sodium azide, 50% glycerol, pH7.3.

Storage:

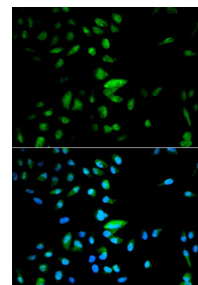
Store at -20°C, and avoid repeat freeze-thaw cycles.



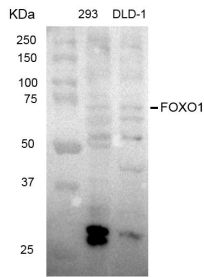
Western blot analysis of extracts of various cell lines, using FOXO1 antibody at 1:950 dilution.
Secondary antibody: HRP Goat Anti-Rabbit IgG (H+L) at 1:10000 dilution.
Lysates/proteins: 25ug per lane.
Blocking buffer: 3% nonfat dry milk in TBST



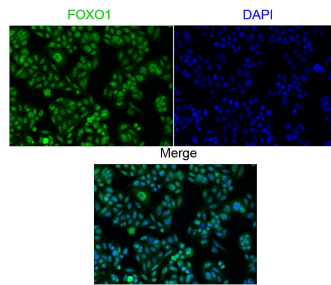
Western blot analysis of extracts of various cell lines, using FOXO1 antibody at 1:1000 dilution.
Secondary antibody: HRP Goat Anti-Rabbit IgG (H+L) at 1:10000 dilution.
Lysates/proteins: 25ug per lane.
Blocking buffer: 3% nonfat dry milk in TBST.
Detection: ECL West Pico Plus
Exposure time: 90s.



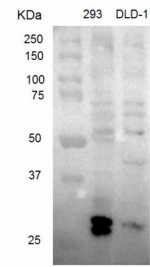
Immunofluorescence analysis of HeLa cells using FOXO1 antibody
Blue: DAPI for nuclear staining.



Application: Western blot (WB)
 Sample 293T
 Loading Amount 20 ug
 Dilution 1:1000
 Incubation time over night
 Temperature 4 °C
 Exposure 15s
 Observed Band 70 kDa
 Remarks Western blot analysis of
 extracts from HEK 293 cells and DLD-1
 cells using FOXO1 Antibody (1:1000)



Application Immunofluorescence(IF)
 Sample SW480
 Dilution 1:200
 Incubation time over night
 Temperature 4 °C
 Remarks Immunofluorescent images of
 SW480 cells showing nuclear and
 cytoplasmic localization with FOXO1
 Antibody 1:200 (left)



Application: Western blot (WB)
 Sample HEK293T, DLD-1
 Loading Amount 25 ug
 Dilution 1:1000
 Incubation time over night
 Temperature 4 °C
 Exposure 5s
 Observed Band 70 kDa
 Remarks Western blot analysis of
 extracts of various cell lines, using
 FOXO1 Polyclonal Antibody.

**For Research use only
IMMUNOLOGICAL SCIENCES**