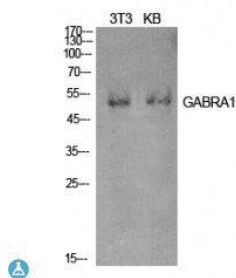
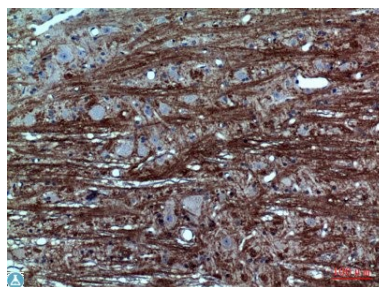


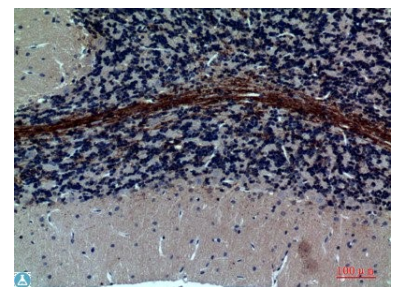
Cat. No:	AB-81943
Conjugate:	Unconjugated
Size:	100 ug
Clone:	POLY
Concentration:	1mg/ml
Host:	Rb
Isotype:	IgG
Immunogen:	Synthesized peptide derived from human GABAA Ralpha1 range
Reactivity:	Hu,Ms,Rt
Applications:	Western Blot: 1:500-1:2000 Immunohistochemistry (paraffin-embedded tissues) 1:100-1:300 ELISA: 1:10000
Purification:	The antibody was affinity-purified from rabbit antiserum by affinity chromatography using epitope-specific immunogen.
Synonyms:	Gamma-aminobutyric acid receptor subunit alpha-1 GABA A receptor subunit alpha-1
Background:	Component of the heteropentameric receptor for GABA, the major inhibitory neurotransmitter in the vertebrate brain. Functions also as histamine receptor and mediates cellular responses to histamine. Functions as receptor for diazepam and various anesthetics, such as pentobarbital; these are bound at a separate allosteric effector binding site. Functions as ligand-gated chloride channel . GABAA Ralpha1 Polyclonal Antibody detects endogenous levels of GABAA Ralpha1 protein.
Form:	Liquid
Buffer:	Liquid in PBS containing 50% glycerol, 0.5% BSA and 0.02% sodium azide.
Storage:	Store at -20°C, and avoid repeat freeze-thaw cycles.



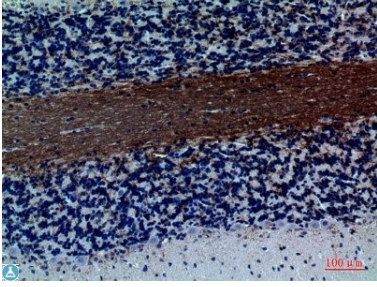
Western Blot (WB) analysis of NIH-3T3, KB cells using GABAA Ralpha1 polyclonal antibody.



Immunohistochemistry (IHC) analysis of paraffin-embedded Rat Brain, antibody was diluted at 1:100.



Immunohistochemistry (IHC) analysis of paraffin-embedded Rat Brain, antibody was diluted at 1:100.



Immunohistochemistry (IHC) analysis of paraffin-embedded Rat Brain, antibody was diluted at 1:100.

**For Research use only
IMMUNOLOGICAL SCIENCES**