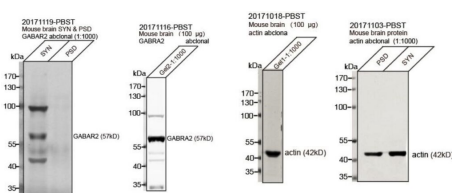


|                          |                                                                                             |
|--------------------------|---------------------------------------------------------------------------------------------|
| <b>Cat. No:</b>          | AB-83890                                                                                    |
| <b>Conjugate:</b>        | Unconjugated                                                                                |
| <b>Size:</b>             | 100 ul                                                                                      |
| <b>Clone:</b>            | POLY                                                                                        |
| <b>Concentration:</b>    | 1mg/ml                                                                                      |
| <b>Host:</b>             | Rb                                                                                          |
| <b>Isotype:</b>          | IgG                                                                                         |
| <b>Immunogen:</b>        | A synthetic peptide corresponding to a sequence within amino acids 300-400 of human GABRA2. |
| <b>Reactivity:</b>       | Hu, Ms,                                                                                     |
| <b>Applications:</b>     | Western Blot: 1:500 - 1:2000                                                                |
| <b>Molecular Weight:</b> | 50kDa                                                                                       |
| <b>Purification:</b>     | Purified                                                                                    |
| <b>Synonyms:</b>         | GABRA2                                                                                      |

**Background:**

GABA is the major inhibitory neurotransmitter in the mammalian brain where it acts at GABA-A receptors, which are ligand-gated chloride channels. Chloride conductance of these channels can be modulated by agents such as benzodiazepines that bind to the GABA-A receptor. At least 16 distinct subunits of GABA-A receptors have been identified. Alternatively, spliced transcript variants encoding different isoforms have been found for this gene.

|                 |                                                      |
|-----------------|------------------------------------------------------|
| <b>Form:</b>    | Liquid                                               |
| <b>Buffer:</b>  | PBS with 0.02% sodium azide,50% glycerol,pH7.3.      |
| <b>Storage:</b> | Store at -20°C, and avoid repeat freeze-thaw cycles. |



Review for GABRA2 Rabbit Polyclonal antibody.

Application: Western blot(WB)

Sample: mouse brain

Loading Amount: 15 ug

Dilution: 1:1000

Incubation time: over night

Temperature: 4 °C

Exposure: 30s

Observed Band: 57 kDa

Remarks: Western blot analysis of extracts of mouse brain, using antibody at 1:1000 dilution.

**For Research use only  
IMMUNOLOGICAL SCIENCES**