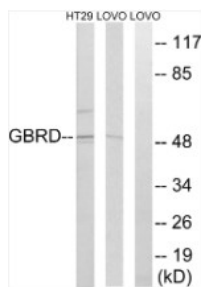


Cat. No:	AB-84235
Conjugate:	Unconjugated
Size:	Hu, Ms, Rt
Clone:	POLY
Concentration:	1mg/ml
Host:	Rb
Isotype:	IgG
Immunogen:	Synthesized peptide derived from human GABAA Rdelta range
Reactivity:	100ug
Applications:	Western Blot: 1:500-1:2000 Immunohistochemistry: 1:100-1:300 ELISA 1:10000
Molecular Weight:	51kDa
Purification:	Aff. Pur. The antibody was affinity-purified from rabbit antiserum by affinity chromatography using epitope-specific immunogen.
Synonyms:	Gamma-aminobutyric acid receptor subunit delta GABA A receptor subunit Delta
Background:	GABA, the major inhibitory neurotransmitter in the vertebrate brain, mediates neuronal inhibition by binding to the GABA/benzodiazepine receptor and opening an integral chloride channel.
Form:	Liquid
Buffer:	Liquid in PBS containing 50% glycerol, 0.5% BSA and 0.02% sodium azide.
Storage:	Store at -20°C. Avoid freeze / thaw cycles.



Lysates from LOVO and HT-29 cells.
The lane on the right is blocked
with the synthesized peptide.

**For Research use only
IMMUNOLOGICAL SCIENCES**