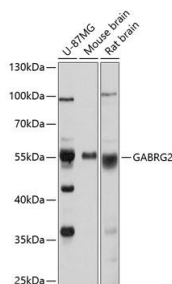


Cat. No:	AB-84229
Conjugate:	Unconjugated
Size:	100 ul
Clone:	POLY
Concentration:	1mg/ml
Host:	Rb
Isotype:	IgG
Immunogen:	A synthetic peptide corresponding to a sequence within amino acids 170-270 of human GABRG2.
Reactivity:	Hu, Ms, Rt
Applications:	Western Blot: 1:500 - 1:2000
Molecular Weight:	54kDa
Purification:	Purified
Synonyms:	GABRG2;CAE2;ECA2;GEFSP3

Background:

This gene encodes a gamma-aminobutyric acid (GABA) receptor. GABA is the major inhibitory neurotransmitter in the mammalian brain, where it acts at GABA-A receptors, which are ligand-gated chloride channels. GABA-A receptors are pentameric, consisting of proteins from several subunit classes: alpha, beta, gamma, delta and rho. Mutations in this gene have been associated with epilepsy and febrile seizures. Multiple transcript variants encoding different isoforms have been identified for this gene.

Form:	Liquid
Buffer:	PBS with 0.02% sodium azide,50% glycerol,pH7.3.
Storage:	Store at -20°C. Avoid freeze / thaw cycles.



Western blot analysis of extracts of various cell lines, using GABRG2 antibody at 1:1000 dilution.
Secondary antibody: HRP Goat Anti-Rabbit IgG (H+L) at 1:10000 dilution.
Lysates/proteins: 25ug per lane.
Blocking buffer: 3% nonfat dry milk in TBST.
Detection: ECL West Pico Plus.
Exposure time: 20s.

**For Research use only
IMMUNOLOGICAL SCIENCES**