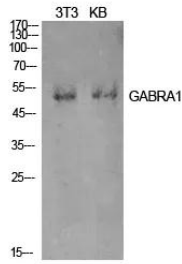
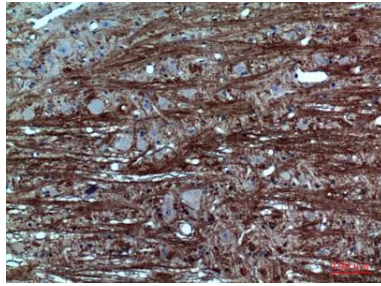


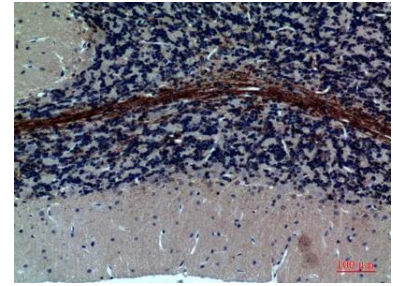
Cat. No:	ABN11233
Conjugate:	Unconjugated
Size:	100ul
Clone:	POLY
Concentration:	1mg/ml
Host:	Rabbit
Isotype:	IgG
Immunogen:	The antiserum was produced against synthesized peptide derived from the Internal region of human GABRA1. AA range:61-110
Reactivity:	Human,Mouse,Rat
Applications:	WB 1:500-1:2000,IHC 1:100-1:300,ICC/IF 1:50-1:200,ELISA 1:5000-1:20000
Molecular Weight:	50kDa
Purification:	Affinity purification
Synonyms:	GABRA1; Gamma-aminobutyric acid receptor subunit alpha-1; GABA(A) receptor subunit alpha-1
Background:	<p>This gene encodes a gamma-aminobutyric acid (GABA) receptor. GABA is the major inhibitory neurotransmitter in the mammalian brain where it acts at GABA-A receptors, which are ligand-gated chloride channels. Chloride conductance of these channels can be modulated by agents such as benzodiazepines that bind to the GABA-A receptor. GABA-A receptors are pentameric, consisting of proteins from several subunit classes: alpha, beta, gamma, delta and rho. Mutations in this gene cause juvenile myoclonic epilepsy and childhood absence epilepsy type 4. Multiple transcript variants encoding the same protein have been identified for this gene. [provided by RefSeq, Jul 2008],disease:Defects in GABRA1 are a cause of juvenile myoclonic epilepsy (EJM) [MIM:606904]. EJM is a subtype of idiopathic generalized epilepsy. Patients have afebrile seizures only, with onset in adolescence (rather than in childhood) and myoclonic jerks which usually occur after awakening and are triggered by sleep deprivation and fatigue.,disease:Defects in GABRA1 are the cause of childhood absence epilepsy type 4 (ECA4) [MIM:611136]. ECA4 is a subtype of idiopathic generalized epilepsy (IGE) characterized by onset at age 6-7 years, frequent absence seizures (several per day) and bilateral, synchronous, symmetric 3-Hz spike waves on EEG. During adolescence, tonic-clonic and myoclonic seizures develop. Absence seizures may either remit or persist into adulthood.,function:GABA, the major inhibitory neurotransmitter in the vertebrate brain, mediates neuronal inhibition by binding to the GABA/benzodiazepine receptor and opening an integral chloride channel.,online information:Forbidden fruit - Issue 56 of March 2005,similarity:Belongs to the ligand-gated ionic channel (TC 1.A.9) family.,subunit:Binds UBQLN1 (By similarity). Generally pentameric. There are five types of GABA(A) receptor chains: alpha, beta, gamma, delta, and rho.,</p>
Form:	liquid
Buffer:	Liquid in PBS containing 50% glycerol, 0.5% protective protein and 0.02% New type preservative N.
Storage:	Store at 4°C short term. Aliquot and store at -20°C long term. Avoid freeze/thaw cycles.



Western Blot analysis of NIH-3T3, KB cells using GABAA R α 1 Polyclonal Antibody. Secondary antibody was diluted at 1:20000



Immunohistochemical analysis of paraffin-embedded rat-brain, antibody was diluted at 1:100



Immunohistochemical analysis of paraffin-embedded rat-brain, antibody was diluted at 1:100