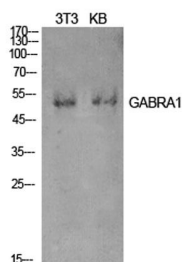
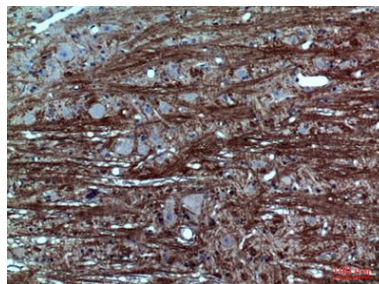


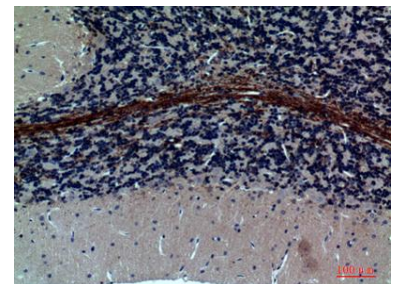
<b>Cat. No:</b>	AB-J7849
<b>Conjugate:</b>	Unconjugated
<b>Size:</b>	100 ug
<b>Clone:</b>	POLY
<b>Concentration:</b>	1mg/ml
<b>Host:</b>	Rabbit
<b>Isotype:</b>	IgG
<b>Immunogen:</b>	The antiserum was produced against synthesized peptide derived from the Internal region of human GABRA1. AA range:61-110
<b>Reactivity:</b>	Human;Mouse;Rat
<b>Applications:</b>	Western Blot: 1/500 - 1/2000 Immunohistochemistry (paraffin-embedded tissues): 1:100-1:300. ELISA: 1/10000
<b>Molecular Weight:</b>	50kD
<b>Purification:</b>	The antibody was affinity-purified from rabbit antiserum by affinity-chromatography using epitope-specific immunogen.
<b>Synonyms:</b>	GABRA1; Gamma-aminobutyric acid receptor subunit alpha-1; GABA(A) receptor subunit alpha-1
<b>Background:</b>	This gene encodes a gamma-aminobutyric acid (GABA) receptor. GABA is the major inhibitory neurotransmitter in the mammalian brain where it acts at GABA-A receptors, which are ligand-gated chloride channels. Chloride conductance of these channels can be modulated by agents such as benzodiazepines that bind to the GABA-A receptor. GABA-A receptors are pentameric, consisting of proteins from several subunit classes: alpha, beta, gamma, delta and rho. Mutations in this gene cause juvenile myoclonic epilepsy and childhood absence epilepsy type 4. Multiple transcript variants encoding the same protein have been identified for this gene.
<b>Form:</b>	Liquid
<b>Buffer:</b>	Liquid in PBS containing 50% glycerol, 0.5% BSA and 0.02% sodium azide.
<b>Storage:</b>	Store at -20°C. Avoid repeated freeze-thaw cycles.



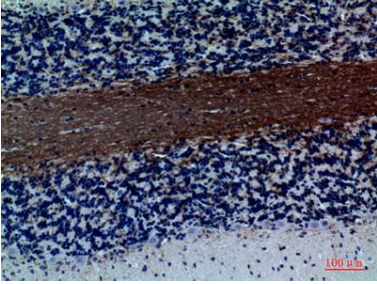
Western Blot analysis of NIH-3T3, KB cells using GABAA R $\alpha$ 1 Polyclonal Antibody. Secondary antibody was diluted at 1:20000



Immunohistochemical analysis of paraffin-embedded rat-brain, antibody was diluted at 1:100



Immunohistochemical analysis of paraffin-embedded rat-brain, antibody was diluted at 1:100



Immunohistochemical analysis of  
paraffin-embedded rat-brain, antibody  
was diluted at 1:100

**For Research use only  
IMMUNOLOGICAL SCIENCES**