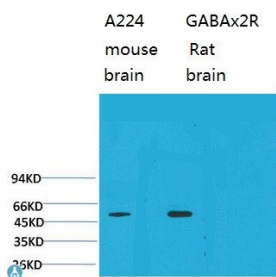
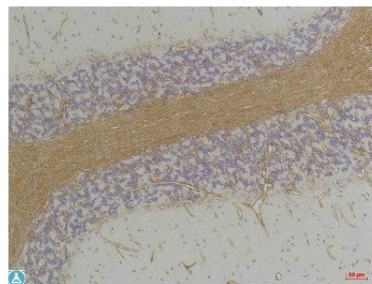


Cat. No:	AB-84223
Conjugate:	Unconjugated
Size:	100 ug
Clone:	POLY
Concentration:	1mg/ml
Host:	Rb
Isotype:	IgG
Immunogen:	Synthetic Peptide
Reactivity:	Hu, Ms, Rt
Applications:	Western Blot: 1:1000-2000 Immunohistochemistry: 1:100-200
Purification:	The antibody was affinity-purified from rabbit antiserum by affinity chromatography using specific immunogen.
Synonyms:	Gamma-aminobutyric acid receptor subunit alpha-2 GABA A receptor subunit alpha-2
Background:	GABA, the major inhibitory neurotransmitter in the vertebrate brain, mediates neuronal inhibition by binding to the GABA/benzodiazepine receptor and opening an integral chloride channel.
Form:	Liquid
Buffer:	Liquid in PBS containing 50% glycerol, 0.5% BSA and 0.02% sodium azide.
Storage:	Store at -20°C, and avoid repeat freeze-thaw cycles.



Western Blot (WB) analysis of 1) Mouse Brain Tissue , 2)Rat Brain Tissue with GABA A Receptor alpha2 Rabbit Polyclonal Antibody diluted at 1:2000.



Immunohistochemistry (IHC) analysis of paraffin-embedded Rat Brain Tissue using GABA A Receptor alpha2 Rabbit Polyclonal Antibody diluted at 1:200.

**For Research use only
IMMUNOLOGICAL SCIENCES**