

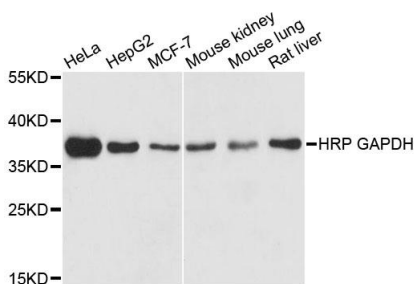
<b>Cat. No:</b>	MAB-10578HRP
<b>Conjugate:</b>	Unconjugated
<b>Size:</b>	100 ug
<b>Clone:</b>	6C5
<b>Concentration:</b>	1mg/ml
<b>Host:</b>	Ms
<b>Isotype:</b>	IgG1
<b>Immunogen:</b>	Recombinant protein of human GAPDH
<b>Reactivity:</b>	Hu, Ms, Rt, Dg, Rb, Ch
<b>Applications:</b>	Western Blot: 1:3000-1:5000
<b>Molecular Weight:</b>	36kDa
<b>Purification:</b>	Purified
<b>Synonyms:</b>	G3PD;GAPD;HEL-S-162eP

This gene encodes a member of the glyceraldehyde-3-phosphate dehydrogenase protein family. The encoded protein has been identified as a moonlighting protein based on its ability to perform mechanistically distinct functions. The product of this gene catalyzes an important energy-yielding step in carbohydrate metabolism, the reversible oxidative phosphorylation of glyceraldehyde-3-phosphate in the presence of inorganic phosphate and nicotinamide adenine dinucleotide (NAD). The encoded protein has additionally been identified to have uracil DNA glycosylase activity in the nucleus. Also, this protein contains a peptide that has antimicrobial activity against *E. coli*, *P. aeruginosa*, and *C. albicans*. Studies of a similar protein in mouse have assigned a variety of additional functions including nitrosylation of nuclear proteins, the regulation of mRNA stability, and acting as a transferrin receptor on the cell surface of macrophage. Many pseudogenes similar to this locus are present in the human genome. Alternative splicing results in multiple transcript variants.

**Background:**

**Form:** Liquid

**Buffer:** PBS with 0.02% sodium azide,50% glycerol,pH7.3.



Western blot analysis of extracts of various cell lines, using- HRP-Conjugated GAPDH

Antibody at 1:5000 dilution.

Lysates/Proteins: 25ug per lane.

Blocking buffer: 3% nonfat dry milk in

TBST.  
Detection: ECL Basic.  
Exposure time: 90s

**For Research use only  
IMMUNOLOGICAL SCIENCES**