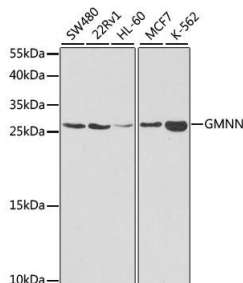
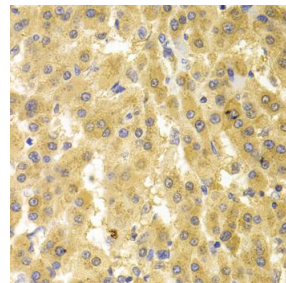


Cat. No:	AB-81872
Size:	100 ug
Clone:	POLY
Concentration:	1mg/ml
Host:	Rb
Isotype:	IgG
Immunogen:	Recombinant fusion protein containing a sequence corresponding to amino acids 1-209 of human GMNN,
Reactivity:	Hu
Applications:	Western Blot: 1:500 - 1:2000 Immunohistochemistry (paraffin-embedded tissues): 1:50 - 1:200
Molecular Weight:	24kDa
Purification:	Aff. Pur.
Synonyms:	GMNN; Gem; MGORS6; geminin
Background:	This gene encodes a protein that plays a critical role in cell cycle regulation. The encoded protein inhibits DNA replication by binding to DNA replication factor Cdt1, preventing the incorporation of minichromosome maintenance proteins into the prereplication complex. The encoded protein is expressed during the S and G2 phases of the cell cycle and is degraded by the anaphase-promoting complex during the metaphase-anaphase transition. Increased expression of this gene may play a role in several malignancies including colon, rectal and breast cancer. Alternatively spliced transcript variants have been observed for this gene, and two pseudogenes of this gene are located on the short arm of chromosome 16.
Form:	Liquid
Buffer:	PBS with 0.02% sodium azide,50% glycerol,pH7.3.
Storage:	Store at -20°C. Avoid freeze / thaw cycles.



Western blot analysis of extracts of various cell lines, using GMNN antibody at 1:1000 dilution.
Secondary antibody: HRP Goat Anti-Rabbit IgG (H+L) at 1:10000 dilution.
Lysates/proteins: 25ug per lane.
Blocking buffer: 3% nonfat dry milk in TBST.
Detection: ECL Basic Kit



Immunohistochemistry of paraffinembedded human liver cancer using GMNN antibody at dilution of 1:100 (40x lens).

Exposure time: 90s.

**For Research use only
IMMUNOLOGICAL SCIENCES**