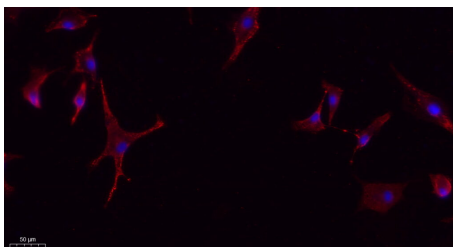
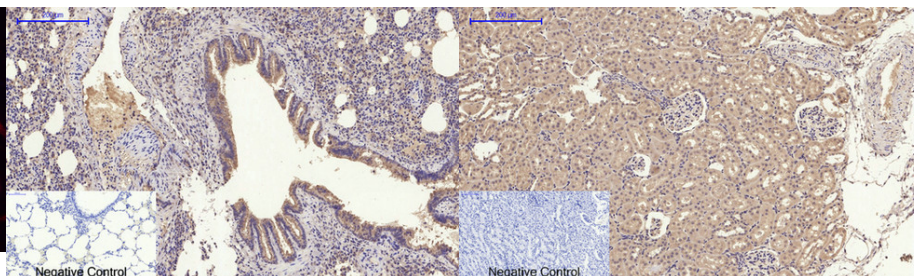


<b>Cat. No:</b>	AB-82631
<b>Conjugate:</b>	Unconjugated
<b>Size:</b>	100 ug
<b>Clone:</b>	POLY
<b>Concentration:</b>	1mg/ml
<b>Host:</b>	Rb
<b>Isotype:</b>	IgG
<b>Immunogen:</b>	The antiserum was produced against synthetic peptide derived from the N-terminal region of human SLC2A4, AA range 21-70
<b>Reactivity:</b>	Hu,Ms,Rt
<b>Applications:</b>	WB 1:500 - 1:1000 IHC: 1:100-200 IF 1:100-200
<b>Molecular Weight:</b>	56KD
<b>Purification:</b>	Aff. Pur.
<b>Synonyms:</b>	SLC2A4;GLUT4;Solute carrier family 2, facilitated glucose transporter member 4;Glucose transporter type 4, insulin-responsive;GLUT-4
<b>Background:</b>	This gene is a member of the solute carrier family 2 (facilitated glucose transporter) family and encodes a protein that functions as an insulin-regulated facilitative glucose transporter. In the absence of insulin, this integral membrane protein is sequestered within the cells of muscle and adipose tissue. Within minutes of insulin stimulation, the protein moves to the cell surface and begins to transport glucose across the cell membrane. Mutations in this gene have been associated with noninsulin-dependent diabetes mellitus (NIDDM).
<b>Form:</b>	Liquid
<b>Buffer:</b>	PBS containing 50% glycerol, 0.5% BSA and 0.02% sodium azide
<b>Storage:</b>	Store at -20°C. Avoid repeated freeze-thaw cycles.



Immunofluorescence analysis of A549. 1,primary Antibody(red) was diluted at 1:200(4°C overnight). 2, Goat Anti Rabbit IgG (H&L) - Alexa Fluor 594 Secondary antibody was diluted at 1:1000(room temperature, 50min).3, Picture B: DAPI(blue) 10min.

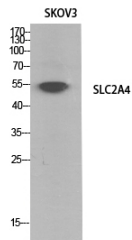


Immunohistochemical analysis of paraffin-embedded Rat-lung tissue. 1,Glut4 Polyclonal Antibody was diluted at 1:200(4°C,overnight). 2, Sodium citrate pH 6.0 was used for antibody retrieval(>98°C,20min). 3,Secondary antibody was diluted at 1:200(room temperature, 30min). Negative control

Immunohistochemical analysis of paraffin-embedded Rat-kidney tissue. 1,Glut4 Polyclonal Antibody was diluted at 1:200(4°C,overnight). 2, Sodium citrate pH 6.0 was used for antibody retrieval(>98°C,20min). 3,Secondary antibody was diluted at 1:200(room temperature, 30min). Negative control

was used by secondary antibody only.

was used by secondary antibody only.



Western Blot analysis of SKOV3 cells  
using Glut4 Polyclonal Antibody.  
Secondary antibody was diluted at  
1:20000