

**Cat. No:** AB-J8091  
**Conjugate:** Unconjugated  
**Size:** 100 ug  
**Clone:** POLY  
**Concentration:** 1mg/ml  
**Host:** Rabbit  
**Isotype:** IgG  
**Immunogen:** The antiserum was produced against synthesized peptide derived from human GluR1. AA range:816-865

**Reactivity:** Human;Mouse;Rat  
**Applications:** Western Blot: 1/500 - 1/2000.  
 Immunohistochemistry: 1/100 - 1/300  
 Immunofluorescence: 1/200 - 1/1000

**Molecular Weight:** 95kDa

**Purification:** The antibody was affinity-purified from rabbit antiserum by affinity-chromatography using epitope-specific immunogen.

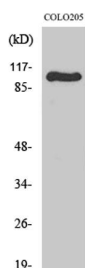
**Synonyms:** GRIA1; GLUH1; GLUR1; Glutamate receptor 1; GluR-1; AMPA-selective glutamate receptor 1; GluR-A; GluR-K1; Glutamate receptor ionotropic; AMPA 1; GluA1

**Background:** Glutamate receptors are the predominant excitatory neurotransmitter receptors in the mammalian brain and are activated in a variety of normal neurophysiologic processes. These receptors are heteromeric protein complexes with multiple subunits, each possessing transmembrane regions, and all arranged to form a ligand-gated ion channel. The classification of glutamate receptors is based on their activation by different pharmacologic agonists. This gene belongs to a family of alpha-amino-3-hydroxy-5-methyl-4-isoxazole propionate (AMPA) receptors. Alternatively spliced transcript variants encoding different isoforms have been found for this gene.

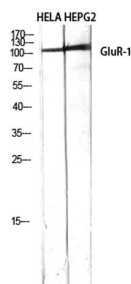
**Form:** Liquid

**Buffer:** Liquid in PBS containing 50% glycerol, 0.5% BSA and 0.02% sodium azide.

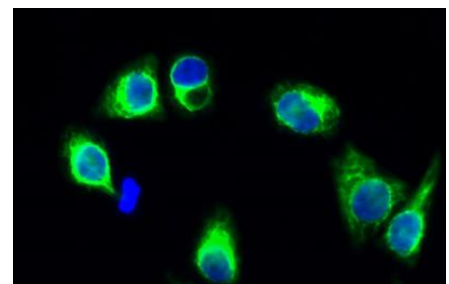
**Storage:** Store at -20°C. Avoid repeated freeze-thaw cycles.



Western Blot analysis of various cells using GluR-1 Polyclonal Antibody diluted at 1:500

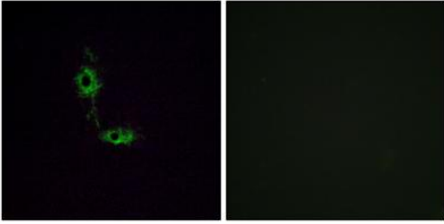


Western Blot analysis of HELA HEPG2 using GluR-1 Polyclonal Antibody diluted at 1:500



Immunofluorescence analysis of HeLa cell. 1, GluR-1 Polyclonal Antibody (green) was diluted at 1:200 (4° overnight). 2, Goat Anti Rabbit Alexa Fluor 488 was diluted at 1:1000 (room temperature),

50min). 3 DAPI(blue) 10min.



Immunofluorescence analysis of HeLa cells, using GluR1 Antibody. The picture on the right is blocked with the synthesized peptide.

**For Research use only  
IMMUNOLOGICAL SCIENCES**