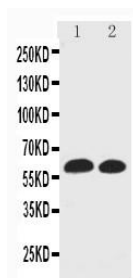
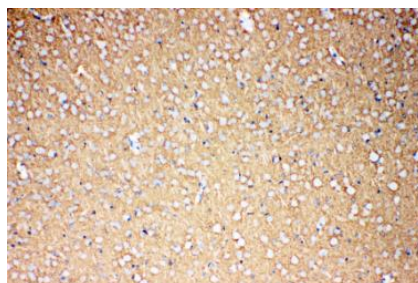


**Cat. No:** AB-82224**Conjugate:** Unconjugated**Size:** 100 ug**Clone:** POLY**Concentration:** 1mg/ml**Host:** Rb**Isotype:** IgG**Immunogen:** A synthetic peptide corresponding to a sequence at the Cterminus of human EAAT1(519-537aa MKKPYQLIAQDNETEKPID), different from the related rat and mouse sequences by three amino acids.**Reactivity:** Human, Mouse, Rat**Applications:** Western blot 0.1-0.5µg/ml  
Immunohistochemistry(Paraffin-embedded Section): 0.5-1µg/ml  
Immunohistochemistry(Frozen-Section): 0.5-1µg/ml**Purification:** Immunogen affinity purified**Background:** Solute carrier family 1(glial high-affinity glutamate transporter), member 3, also known as SLC1A3,EAAT1 or GLAST, is a protein that in humans is encoded by the SLC1A3 gene. This gene is a member of high affinity glutamate transporter family. SLC1A3 is mapped to chromosome 5p13.2 by fluorescence in situ hybridization(FISH). This gene transports L-glutamate and also L- and D- aspartate. It is essential for terminating the postsynaptic action of glutamate by rapidly removing released glutamate from the synaptic cleft. This gene acts as a symport by cotransporting sodium.**Form:** Liquid**Buffer:** Each vial contains 5mg BSA, 0.9mg NaCl, 0.2mg Na<sub>2</sub>HPO<sub>4</sub>,0.05mg Thimerosal, 0.05mg Na<sub>3</sub>N.**Storage:** At -20°C for one year. It can also be aliquotted and stored frozen at -20°C for a longer time. Avoid repeated freezing and thawing.

Anti-EAAT1 antibody, Western blotting  
Lane 1: Rat Brain Tissue Lysate Lane 2:  
Mouse Brain Tissue Lysate



Anti-EAAT1 antibody, IHC(P) IHC(P): Rat  
Brain Tissue

**For Research use only  
IMMUNOLOGICAL SCIENCES**