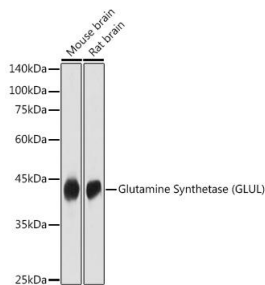


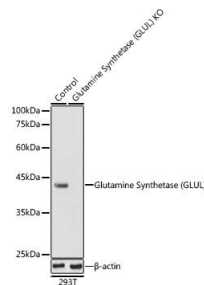
Cat. No:	AB-83854
Size:	100 ug
Clone:	POLY
Concentration:	1mg/ml
Host:	Rb
Isotype:	IgG
Immunogen:	Recombinant fusion protein containing a sequence corresponding to amino acids 1-373 of human GS
Reactivity:	Hu, Ms, Rt
Applications:	Western Blot: 1:500 -1:2000 Immunohistochemistry: 1:50 - 1:200 Immunofluorescence: 1:50 - 1:200
Molecular Weight:	42kDa
Purification:	Aff. Pur.
Synonyms:	GS; GLNS; GS; PIG43; PIG59; glutamine synthetase

Background: The protein encoded by this gene belongs to the glutamine synthetase family. It catalyzes the synthesis of glutamine from glutamate and ammonia in an ATP dependent reaction. This protein plays a role in ammonia and glutamate detoxification, acid-base homeostasis, cell signaling, and cell proliferation. Glutamine is an abundant amino acid, and is important to the biosynthesis of several amino acids, pyrimidines, and purines. Mutations in this gene are associated with congenital glutamine deficiency, and overexpression of this gene was observed in some primary liver cancer samples. There are six pseudogenes of this gene found on chromosomes 2, 5, 9, 11, and 12. Alternative splicing results in multiple transcript variants. GS Polyclonal antibody is KO validated.

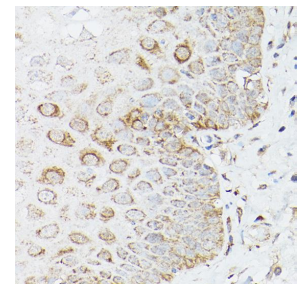
Form:	Liquid
Buffer:	PBS with 0.02% sodium azide, 50% glycerol, pH7.
Storage:	Store at -20°C. Avoid freeze / thaw cycles.



Western blot analysis of extracts of various cell lines, using Glutamine Synthetase (GLUL) antibody at 1:1000 dilution.
Secondary antibody: HRP Goat Anti-Rabbit IgG (H+L) at 1:10000 dilution.
Lysates/proteins: 25ug per lane.
Blocking buffer: 3% nonfat dry milk in

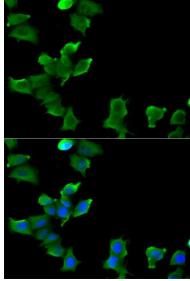


Western blot analysis of extracts from normal (control) and Glutamine Synthetase (GLUL) 293T cells, using Glutamine Synthetase (GLUL) antibody at 1:1000 dilution.
Secondary antibody: HRP Goat Anti-Rabbit IgG (H+L) at 1:10000 dilution.
Lysates/proteins: 25ug per lane. Blocking



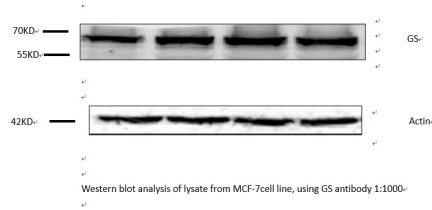
Immunohistochemistry of paraffin embedded human esophageal using Glutamine Synthetase (Glutamine Synthetase (GLUL)) Rabbit pAb at dilution of 1:150 (40x lens).

TBST.
Detection: ECL West Pico Plus. Exposure
time: 5s..



Immunofluorescence analysis of MCF-7
cells using Glutamine Synthetase
(Glutamine Synthetase (GLUL)) antibody
Blue: DAPI for nuclear staining.

buffer: 3% nonfat dry milk in TBST.
Detection: ECL West Pico Plus. Exposure
time: 5s.



Review for Glutamine Synthetase (GLUL)
Rabbit pAb
Experiment Type Western blot
SampleMCF-7

References

References for Glutamine Synthetase (GLUL) Rabbit pAb

Product: Glutamine Synthetase (GLUL) Rabbit pAb

Journal:Front Oncol

Application:WB

IF:Species:Homo sapiens

PMID:33552953

Title:Rhophilin-2 Upregulates Glutamine Synthetase by Stabilizing c-Myc Protein and Confers Resistance to Glutamine Deprivation in Lung Cancer

**For Research use only
IMMUNOLOGICAL SCIENCES**