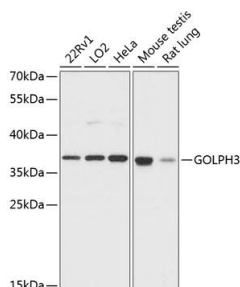
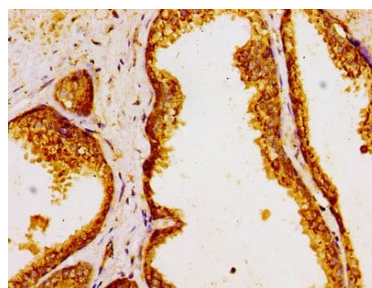


<b>Cat. No:</b>	AB-84328
<b>Conjugate:</b>	Unconjugated
<b>Size:</b>	100ug
<b>Clone:</b>	POLY
<b>Concentration:</b>	1mg/ml
<b>Host:</b>	Rb
<b>Isotype:</b>	IgG
<b>Immunogen:</b>	Recombinant fusion protein containing a sequence corresponding to amino acids 1-298 of human GOLPH3.
<b>Reactivity:</b>	Hu, Ms, Rt
<b>Applications:</b>	Western Blot: 1:500 - 1:2000 Immunohistochemistry: 1:100 - 1:200 Immunofluorescence: 1:50 - 1:200
<b>Molecular Weight:</b>	37kDa
<b>Purification:</b>	Aff. Pur.
<b>Synonyms:</b>	GOLPH3;GOPP1;GPP34;MIDAS;Vps74
<b>Background:</b>	The Golgi complex plays a key role in the sorting and modification of proteins exported from the endoplasmic reticulum. The protein encoded by this gene is a peripheral membrane protein of the Golgi stack and may have a regulatory role in Golgi trafficking. Several alternatively spliced transcript variants of this gene have been described, but the full-length nature of these variants has not been determined.
<b>Form:</b>	Liquid
<b>Buffer:</b>	PBS with 0.02% sodium azide,50% glycerol,pH7.3.
<b>Storage:</b>	Store at -20°C. Avoid freeze / thaw cycles.

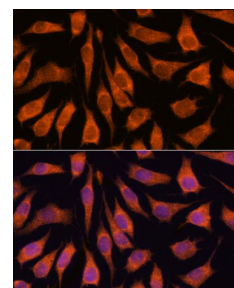


Western blot analysis of extracts of various cell lines, using GOLPH3 antibody at 1:3000 dilution.

Secondary antibody: HRP Goat Anti-Rabbit IgG (H+L) at 1:10000 dilution.  
Lysates/proteins: 25ug per lane.  
Blocking buffer: 3% nonfat dry milk in TBST.  
Detection: ECL West Pico Plus.



Immunohistochemistry Paraffin-embedded human prostate cancer tissue stained for GOLPH3/MIDAS using at 1:100 dilution in immunohistochemical analysis.



Immunofluorescence analysis of L929 cells using GOLPH3 antibody at dilution of 1:100. Blue: DAPI for nuclear staining.

Exposure time: 15s.

**For Research use only  
IMMUNOLOGICAL SCIENCES**