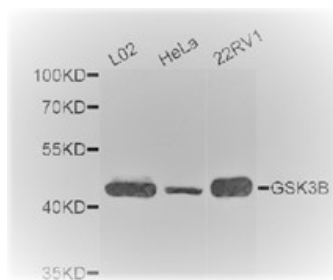


Cat. No:	MAB-94146
Size:	100 ug
Clone:	D85E12
Concentration:	1mg/ml
Host:	Rb
Isotype:	IgG
Immunogen:	Recombinant protein of human GSK3B
Reactivity:	Hu, Ms ,Rt
Applications:	WB 1:1000 IHC 1:100 IF 1:100
Molecular Weight:	47 kDa
Purification:	Aff. Pur.

Background: The protein encoded by this gene is a serine-threonine kinase, belonging to the glycogen synthase kinase subfamily. It is involved in energy metabolism, neuronal cell development, and body pattern formation. Polymorphisms in this gene have been implicated in modifying risk of Parkinson disease, and studies in mice show that overexpression of this gene may be relevant to the pathogenesis of Alzheimer disease. Alternatively spliced transcript variants encoding different isoforms have been found for this gene.

Form: Liquid
Buffer: PBS with 0.02% sodium azide, 50% glycerol, pH7.3.
Storage: Store at -20°C. Avoid freeze / thaw cycles



Western blot analysis of extracts of various cell lines, using GSK3B antibody.

**For Research use only
IMMUNOLOGICAL SCIENCES**