

**Cat. No:** MAB-94446  
**Size:** 100 ug  
**Clone:** IS-23  
**Concentration:** 1mg/ml  
**Host:** Ms  
**Isotype:** IgG2b

**Immunogen:** A synthesized peptide derived from human EGFR (ErbB 1) Antibody EGFR is a receptor tyrosine kinase. Receptor for epidermal growth factor (EGF) and related growth factors including TGFalpha, amphiregulin, betacellulin, heparin-binding EGF-like growth factor, GP30 and vaccinia virus growth factor. Is involved in the control of cell growth and differentiation.

**Reactivity:** Hu, Ms, Rt

**Applications:** Western Blot: 1:500-1:2000  
 Immunohistochemistry: 1:50-1:100  
 Immunocytochemistry: 1:50- 1:200  
 Immunofluorescence: 1:50-1:200  
 Immunoprecipitation: 1:50-1:200

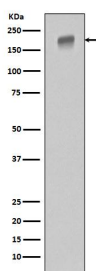
**Molecular Weight:** 175kDa

**Purification:** Affinity-chromatography

**Form:** Liquid

**Buffer:** PBS with 0.02% sodium azide,50% glycerol,pH7.3.

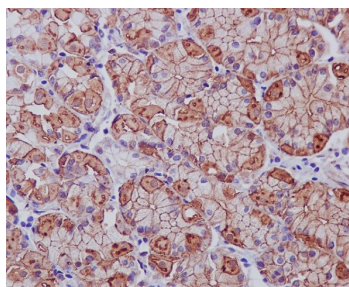
**Storage:** Store at +4°C short term. Store at -20°C long term. Avoid freeze / thaw cycle



Western blot analysis of extracts of OVCAR3 cells, using EGFR Rabbit pAb at 1:1000 dilution.

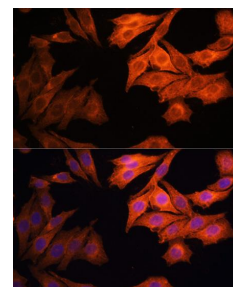
Secondary antibody: HRP Goat Anti-Rabbit IgG (H+L) at 1:10000 dilution.  
 Lysates/proteins: 25ug per lane.  
 Blocking buffer: 3% nonfat dry milk in TBST.

Detection: ECL West Pico Plus.  
 Exposure time: 10s.



IHC analysis of EGFR using anti-EGFR antibody on paraffin-embedded human stomach cancer.

EGFR was detected in paraffin-embedded section. Heat mediated antigen retrieval was performed in citrate buffer (pH6, epitope retrieval solution) for 20 mins. The tissue section was blocked with 10% goat serum. The tissue section was then incubated with 1ug/ml rabbit anti-EGFR Antibody overnight at 4°C. Biotinylated goat anti Rabbit IgG antibody was used as secondary antibody and incubated for 30 minutes at 37°C. The tissue section was developed using Streptavidin-Biotin-



Immunofluorescence analysis of HeLa cells using EGFR antibody at dilution of 1:100.

Blue: DAPI for nuclear staining.

Complex (SABC) with DAB as the  
chromogen.

**For Research use only  
IMMUNOLOGICAL SCIENCES**