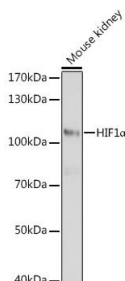


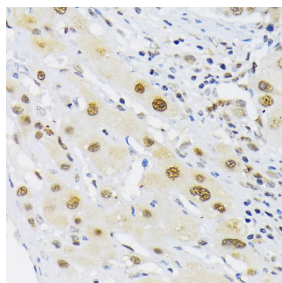
Cat. No: AB-84304
Conjugate: Unconjugated
Size: 100 ug
Clone: POLY
Concentration: 1mg/ml
Host: Rb
Isotype: IgG
Immunogen: Recombinant protein of human HIF1 α .
Reactivity: Hu, Ms, Rt
Applications: Western Blot: 1:500 - 1:2000
Immunohistochemistry: 1:50 - 1:200
Molecular Weight: 110kDa
Purification: Aff. Pur.
Synonyms: HIF1A;HIF-1-alpha;HIF-1A;HIF-1alpha;HIF1;HIF1-ALPHA;MOP1;PASD8;bHLHe78

Background: This gene encodes the alpha subunit of transcription factor hypoxia-inducible factor-1 (HIF-1), which is a heterodimer composed of an alpha and a beta subunit. HIF-1 functions as a master regulator of cellular and systemic homeostatic response to hypoxia by activating transcription of many genes, including those involved in energy metabolism, angiogenesis, apoptosis, and other genes whose protein products increase oxygen delivery or facilitate metabolic adaptation to hypoxia. HIF-1 thus plays an essential role in embryonic vascularization, tumor angiogenesis and pathophysiology of ischemic disease. Alternatively spliced transcript variants encoding different isoforms have been identified for this gene.

Form: Liquid
Buffer: PBS with 0.02% sodium azide, 50% glycerol, pH7.3.
Storage: Store at -20°C, and avoid repeat freeze-thaw cycles.



Western blot analysis of extracts of mouse kidney, using HIF1 α antibody at 1:1000 dilution.
Secondary antibody: HRP Goat Anti-Rabbit IgG (H+L) at 1:10000 dilution.
Lysates/proteins: 25ug per lane.
Blocking buffer: 3% nonfat dry milk in



Immunohistochemistry of paraffin Embedded human liver cancer using HIF1 α antibody at dilution of 1:200 (40x lens).

TBST.
Detection: ECL West Pico Plus.
Exposure time: 5s.

**For Research use only
IMMUNOLOGICAL SCIENCES**