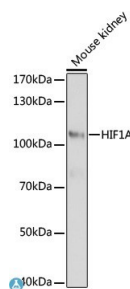
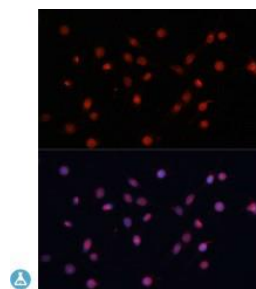


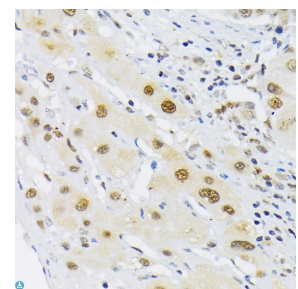
<b>Cat. No:</b>	AB-84138
<b>Conjugate:</b>	Unconjugated
<b>Size:</b>	100 ug
<b>Clone:</b>	POLY
<b>Concentration:</b>	1mg/ml
<b>Host:</b>	Rb
<b>Isotype:</b>	IgG
<b>Immunogen:</b>	Recombinant protein of human HIF1A.
<b>Reactivity:</b>	Hu, Ms, Rt
<b>Applications:</b>	Western Blot: 1:500 - 1:2000 Immunohistochemistry: 1:50 - 1:200 Immunofluorescence: 1:50 - 1:200
<b>Molecular Weight:</b>	82kDa/92kDa/95kDa
<b>Purification:</b>	Aff. Pur.
<b>Synonyms:</b>	HIF1A Hypoxia-inducible factor 1-alpha antibody HIF-1-alpha antibody HIF1- alpha antibody ARNT-interacting protein antibody Basic-helix-loop-helix-PAS protein MOP1 antibody Class E basic helix-loop-helix protein 78 antibody bHLHe78 antibody. Member of PAS protein 1 antibody PAS domaincontaining protein 8 HIF1A antibody BHLHE78 antibody MOP1 antibody PASD8.
<b>Form:</b>	Liquid
<b>Buffer:</b>	PBS with 0.02% sodium azide, 50% glycerol, pH7.3.
<b>Storage:</b>	Store at -20°C, and avoid repeat freeze-thaw cycles.



Western Blot analysis of AB-84138



Immunofluorescence analysis of  
AB-84138



Immunohistochemistry analysis of  
AB-84138

**For Research use only  
IMMUNOLOGICAL SCIENCES**