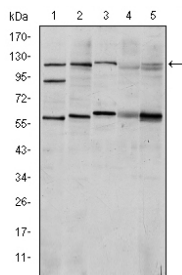
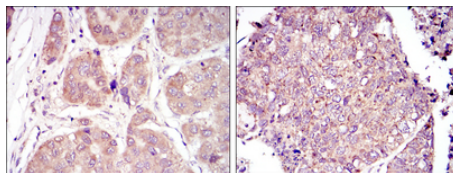


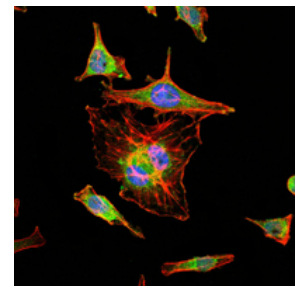
<b>Cat. No:</b>	MAB-95048
<b>Conjugate:</b>	Unconjugated
<b>Size:</b>	100 ug
<b>Clone:</b>	1A3
<b>Concentration:</b>	1mg/ml
<b>Host:</b>	Mouse
<b>Isotype:</b>	IgG
<b>Immunogen:</b>	Purified recombinant fragment of human HIF-1alpha expressed in E. Coli.
<b>Reactivity:</b>	Human, Monkey, Mouse
<b>Applications:</b>	Western Blot: 1:500-1:2000 Immunohistochemistry: 1:200-1:1000 Immunofluorescence: 1:200-1:1000 ELISA 1:10000
<b>Purification:</b>	Affinity purification
<b>Form:</b>	Liquid
<b>Buffer:</b>	Ascitic fluid containing 0.03% sodium azide.
<b>Storage:</b>	Store at -20°C for one year. For short term storage and frequent use, store at 4°C for up to one month.



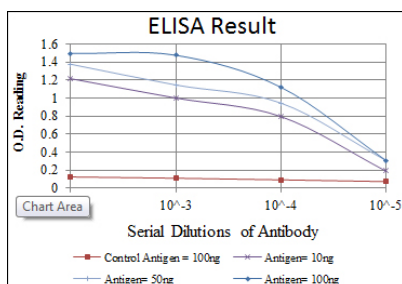
Western blotting validation for Anti-HIF-1alpha HIF1A Monoclonal Antibody Western Blot (WB) analysis using HIF-1alpha Monoclonal Antibody against Cos7 (1).



Immunohistochemistry validation of HIF1A using Anti- HIF-alpha HIF1A Monoclonal Antibody. Immunohistochemistry (IHC) analysis of paraffin-embedded liver cancer tissues (left) and Lung Cancer Tissues (right) with DAB staining using HIF-1alpha Monoclonal Antibody.



Immunofluorescent staining data of HIF1A using Anti- HIF-alpha HIF1A Monoclonal Antibody. Immunofluorescence (IF) analysis of HeLa cells using HIF-1alpha Monoclonal Antibody (green). Blue: DRAQ5 fluorescent DNA dye. Red: Actin filaments have been labeled with Alexa Fluor-555 phalloidin.



ELISA validation of HIF1A using Anti-HIF-  
alpha HIF1A Monoclonal Antibody. ELISA  
analysis of HIF-1alpha antibody.

**For Research use only  
IMMUNOLOGICAL SCIENCES**