

**Cat. No:** MAB-91879  
**Conjugate:** Unconjugated  
**Size:** 100 ug  
**Clone:** B8  
**Concentration:** 1mg/mL  
**Host:** Mouse  
**Isotype:** IgG1  
**Immunogen:** A synthetic peptide corresponding to His tag.  
**Reactivity:** All Species

**Applications:** Western Blot: 1:5000-1:20000  
 Immunofluorescence: 1:50 - 1:200  
 Immunocytochemistry: 1:50 - 1:200  
 Immunoprecipitation: 1:50 - 1:200

**Molecular Weight:** 27kDa/35kDa

**Purification:** Affinity purification

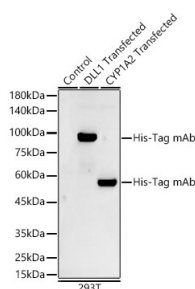
**Synonyms:** His;His tag;His-tag

**Background:** Consecutive histidine residues (usually 6 to 10 in length) are often inserted into the amino acid sequences of recombinant proteins. The resulting His-tagged proteins can be detected by using His antibodies.

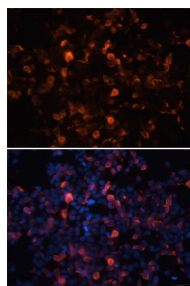
**Form:** Liquid

**Buffer:** PBS with 0.05% proclin300,50% glycerol,pH7.3.

**Storage:** Store at -20°C. Avoid freeze / thaw cycles.



Western blot analysis of various lysates, using His-Tag mAb at 1:5000 dilution.  
 Secondary antibody: HRP Goat Anti-Mouse IgG (H+L) at 1:10000 dilution.  
 Lysates/proteins: 25µg per lane.  
 Blocking buffer: 3% nonfat dry milk in TBST.  
 Detection: ECL West Pico Plus.  
 Exposure time: 90s.



Immunofluorescence analysis of 293T cells using Mouse anti His-Tag mAb  
 Blue: DAPI for nuclear staining.

**For Research use only  
IMMUNOLOGICAL SCIENCES**