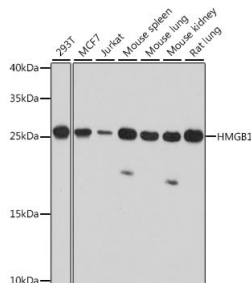


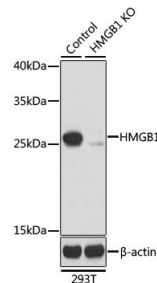
Cat. No:	AB-83934
Size:	100 ug
Clone:	POLY
Concentration:	1mg/ml
Host:	Rb
Isotype:	IgG
Immunogen:	A synthetic peptide corresponding to a sequence within amino acids 100-200 of human HMGB1
Reactivity:	Hu, Rt, Ms
Applications:	Western Blot: 1:500 - 1: 2000 Immunohistochemistry: 1: 50 - 1: 200 Immunofluorescence: 1: 50 -1: 200
Molecular Weight:	25kDa
Purification:	Purified
Synonyms:	HMGB1; HMG-1; HMG1; HMG3; SBP-1; high mobility group box 1
Background:	This gene encodes a protein that belongs to the High Mobility Group-box superfamily. The encoded non-histone, nuclear DNA-binding protein regulates transcription, and is involved in organization of DNA. This protein plays a role in several cellular processes, including inflammation, cell differentiation and tumor cell migration. Multiple pseudogenes of this gene have been identified. Alternative splicing results in multiple transcript variants that encode the same protein.
Form:	Liquid
Buffer:	Liquid in PBS containing 0.02% sodium azide, 50% glycerol, Ph7.3.
Storage:	At +4°C for short term. For longer term store at -20°C, avoid repeat freeze-thaw cycles.



Western blot on different Cells : Positive samples 293T, MCF7, Jurkat, Mouse spleen, Mouse lung, Mouse kidney, Rat lung

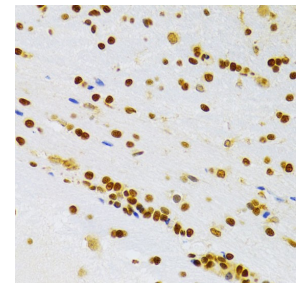
Western blot analysis of extracts of various cell lines, using HMGB1 at 1:1000 dilution.

Secondary antibody: HRP Goat Anti-Rabbit IgG (H+L) at 1:10000 dilution.
Lysates/proteins: 25ug per lane.



Western blot analysis of extracts from normal (control) and HMGB1 on 293T cells, using HMGB1 antibody at 1:1000 dilution.

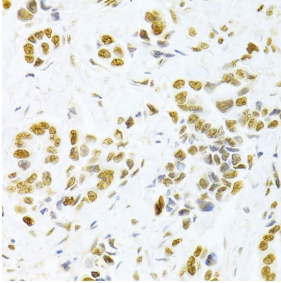
Secondary antibody: HRP Goat Anti-Rabbit IgG (H+L) at 1:10000 dilution.
Lysates/proteins: 25ug per lane.
Blocking buffer: 3% nonfat dry milk in TBST.
Detection: ECL West Pico Plus Kit.



Immunohistochemistry of paraffin-embedded rat brain at 1:100

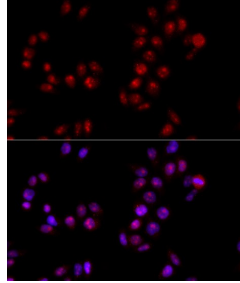
Blocking buffer: 3% nonfat dry milk in
TBST.

Detection: ECL West Pico Plus Kit
Exposure time: 60s.



Immunohistochemistry of paraffin-
embedded human breast cancer at
1:100

Exposure time: 60s.



Immunofluorescence analysis of HeLa
cells using HMGB1 antibody , at 1:100