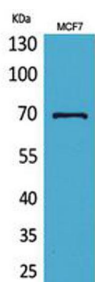
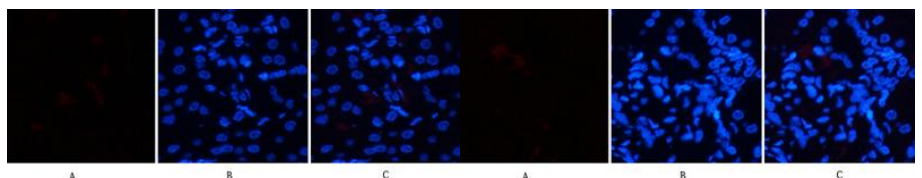


Cat. No:	AB-J8826
Conjugate:	Unconjugated
Size:	100 ug
Clone:	POLY
Concentration:	1mg/ml
Host:	Rabbit
Isotype:	IgG
Immunogen:	Synthesized peptide derived from human HSP70 around the non-acetylation site of K246.
Reactivity:	Human, Mouse, Rat
Applications:	Western Blot: 1/500 -1/2000 Immunofluorescence: 1:50-200 Immunohistochemistry (paraffin-embedded tissues): 1/100-1/300
Molecular Weight:	70 kDa
Purification:	The antibody was affinity-purified from rabbit antiserum by affinity-chromatography using epitope-specific immunogen.
Synonyms:	HSPA1A; HSPA1; HSPA1B; Heat shock 70 kDa protein 1A/1B; Heat shock 70 kDa protein 1/2; HSP70-1/HSP70-2; HSP70.1/HSP70.2
Background:	This intronless gene encodes a 70kDa heat shock protein which is a member of the heat shock protein 70 family. In conjunction with other heat shock proteins, this protein stabilizes existing proteins against aggregation and mediates the folding of newly translated proteins in the cytosol and in organelles. It is also involved in the ubiquitin-proteasome pathway through interaction with the AU-rich element RNA-binding protein 1. The gene is located in the major histocompatibility complex class III region, in a cluster with two closely related genes which encode similar proteins.
Form:	Liquid
Buffer:	Liquid in PBS containing 50% glycerol, 0.5% BSA and 0.02% sodium azide.
Storage:	Store at -20°C. Avoid repeated freeze-thaw cycles.

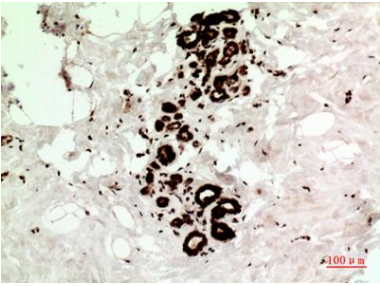


Western Blot analysis of MCF7 cells using HSP70 Polyclonal Antibody. Secondary antibody was diluted at 1:20000



Immunofluorescence analysis of human kidney tissue.
1, HSP70 Polyclonal Antibody (red) was diluted at 1:200 (4°C, overnight).
2, Cy3 labeled Secondary antibody was diluted at 1:300 (room temperature, 50min).
3, Picture B: DAPI (blue) 10min. Picture A: Target. Picture C: merge of A+B

Immunofluorescence analysis of human kidney tissue. 1, HSP70 Polyclonal Antibody (red) was diluted at 1:200 (4°C, overnight). 2, Cy3 labeled Secondary antibody was diluted at 1:300 (room temperature, 50min). 3, Picture B: DAPI (blue) 10min. Picture A: Target. Picture B: DAPI. Picture C: merge of A+B



Immunohistochemical analysis of paraffin-embedded human-Breast-cancer, antibody was diluted at 1:100

**For Research use only
IMMUNOLOGICAL SCIENCES**