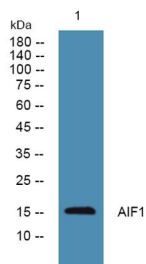
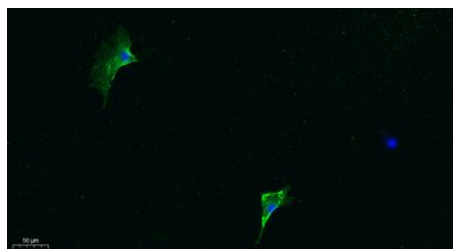


Cat. No:	AB-83747
Conjugate:	Unconjugated
Size:	100 ug
Clone:	POLY
Concentration:	1mg/ml
Host:	Rabbit
Isotype:	IgG
Immunogen:	Synthesized peptide derived from part region of human protein
Reactivity:	Human,Mouse,Rat
Applications:	Western Blot: 1/500 - 1/2000 Immunofluorescence: 1:100-300 ELISA: 1/5000
Molecular Weight:	16kDa
Purification:	The antibody was affinity-purified from rabbit antiserum by affinity-chromatography using epitope-specific immunogen.
Background:	This gene encodes a protein that binds actin and calcium. This gene is induced by cytokines and interferon and may promote macrophage activation and growth of vascular smooth muscle cells and T-lymphocytes. Polymorphisms in this gene may be associated with systemic sclerosis. Alternative splicing results in multiple transcript variants, but the full-length and coding nature of some of these variants is not certain.
Form:	Liquid
Buffer:	Liquid in PBS containing 50% glycerol, 0.5% BSA and 0.02% sodium azide.
Storage:	Store at -20°C. Avoid repeated freeze-thaw cycles.



Western blot analysis of lysates from U2OS cells, primary antibody was diluted at 1:1000, 4°over night



Immunofluorescence analysis of A549.
1,primary Antibody was diluted at 1:200(4°C overnight).
2, Goat Anti Rabbit IgG (H&L) - Alexa Fluor 488 Secondary antibody was diluted at 1:1000(room temperature, 50min).
3, Picture B: DAPI(blue) 10min.

**For Research use only
IMMUNOLOGICAL SCIENCES**