

Cat. No:	AB-81364
Conjugate:	Unconjugated
Size:	100µg
Clone:	POLY
Concentration:	1mg/ml
Host:	Rabbit
Isotype:	IgG
Immunogen:	Recombinant fusion protein containing a sequence corresponding to amino acids 1201-1367 of human IGF1R.
Reactivity:	Human, Mouse, Rat
Applications:	Western Blot: 1:1000 - 1:5000
Molecular Weight:	100kDa
Purification:	Affinity purification
Synonyms:	IGFR; CD221; IGFR; JTK13; 1R

Background:

This receptor binds insulin-like growth factor with a high affinity. It has tyrosine kinase activity. The insulin-like growth factor I receptor plays a critical role in transformation events. Cleavage of the precursor generates alpha and beta subunits. It is highly overexpressed in most malignant tissues where it functions as an anti-apoptotic agent by enhancing cell survival. Alternatively spliced transcript variants encoding distinct isoforms have been found for this gene.

Form:

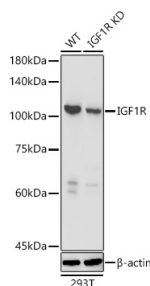
Liquid

Buffer:

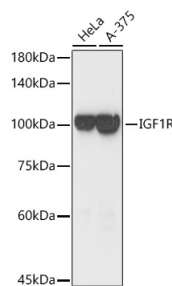
PBS with 0.01% thimerosal, 50% glycerol, pH 7.3.

Storage:

At 4°C for one month. Or store frozen at -20°C for a longer time. Avoid freezing and thawing.



Western blot analysis of lysates from wild type (WT) and IGF1R knockdown (KD) 293T cells using [KD Validated] IGF1R Rabbit pAb at 1:3000 dilution.
Secondary antibody: HRP Goat Anti-Rabbit IgG (H+L) at 1:10000 dilution.
Lysates/proteins: 25 µg per lane.
Blocking buffer: 3% nonfat dry milk in TBST.
Detection: ECL West Pico Plus.



Western blot analysis of various lysates using [KD Validated] IGF1R Rabbit pAb at 1:3000 dilution.
Secondary antibody: HRP Goat Anti-Rabbit IgG (H+L) at 1:10000 dilution.
Lysates / proteins: 25 µg per lane.
Blocking buffer: 3% nonfat dry milk in TBST.
Detection: ECL West Pico Plus.
Exposure time: 10s.

Exposure time: 10s.

**For Research use only
IMMUNOLOGICAL SCIENCES**