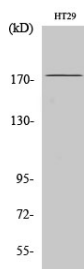
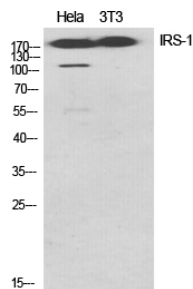


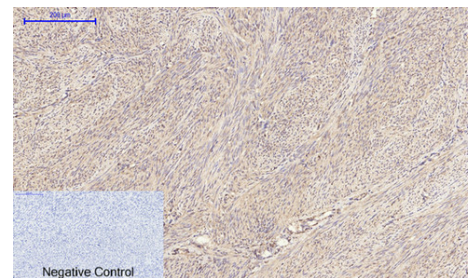
| | |
|--------------------------|--|
| Cat. No: | AB-83501 |
| Conjugate: | Unconjugated |
| Size: | 100 ug |
| Clone: | POLY |
| Concentration: | 1mg/ml |
| Host: | Rb |
| Isotype: | IgG |
| Immunogen: | The antiserum was produced against synthesized peptide derived from human IRS-1 AA range 603-652 |
| Reactivity: | Hu, Ms,Rt |
| Applications: | WB 1:500 - 1:1000. IHC: 1:100-100 IF 1:100-200 |
| Molecular Weight: | 170KD |
| Purification: | Aff. Pur. |
| Synonyms: | IRS-1 |
| Background: | This gene encodes a protein which is phosphorylated by insulin receptor tyrosine kinase. Mutations in this gene are associated with type II diabetes and susceptibility to insulin resistance. |
| Form: | Liquid |
| Buffer: | PBS containing 50% glycerol, 0.5% BSA and 0.02% sodium azide |
| Storage: | Store at -20°C. Avoid repeated freeze-thaw cycles. |



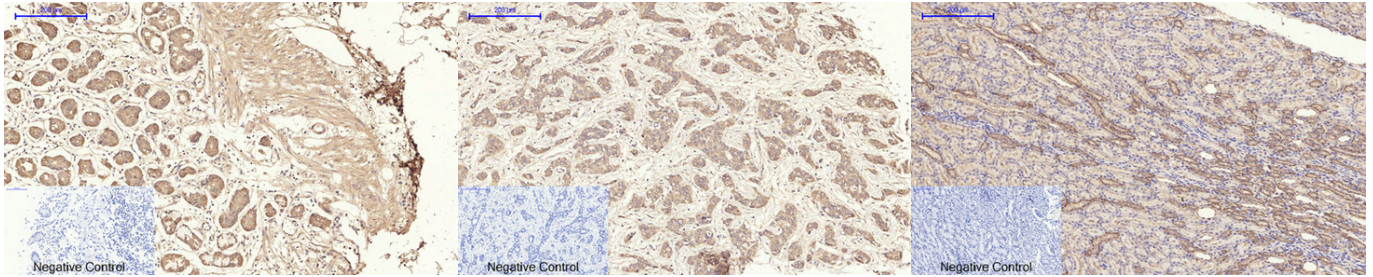
Western Blot analysis of HT29 cells using IRS-1 Polyclonal Antibody diluted at 1:1000



Western Blot analysis of various cells using IRS-1 Polyclonal Antibody diluted at 1:1000



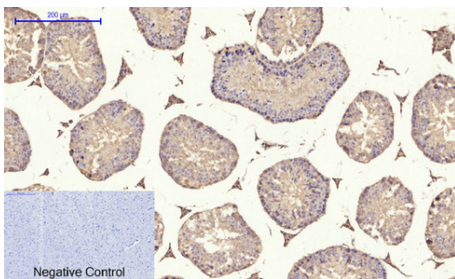
Immunohistochemical analysis of paraffin-embedded Human-uterus tissue. 1, IRS-1 Polyclonal Antibody was diluted at 1:200(4°C, overnight). 2, Sodium citrate pH 6.0 was used for antibody retrieval(>98°C, 20min). 3, Secondary antibody was diluted at 1:200(room temperature, 30min). Negative control was used by secondary antibody only



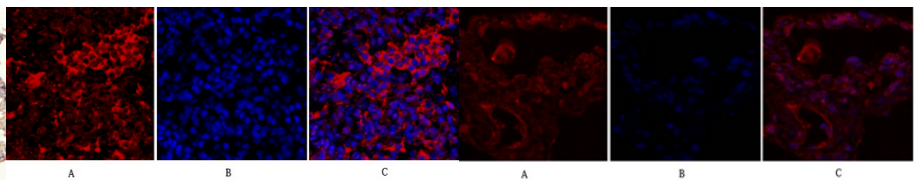
Immunohistochemical analysis of paraffin-embedded Human-stomach tissue. 1,IRS-1 Polyclonal Antibody was diluted at 1:200(4°C,overnight). 2, Sodium citrate pH 6.0 was used for antibody retrieval(>98°C,20min). 3,Secondary antibody was diluted at 1:200(room temperature, 30min). Negative control was used by secondary antibody only

Immunohistochemical analysis of paraffin-embedded Human-liver-cancer tissue. 1,IRS-1 Polyclonal Antibody was diluted at 1:200(4°C,overnight). 2, Sodium citrate pH 6.0 was used for antibody retrieval(>98°C,20min). 3,Secondary antibody was diluted at 1:200(room temperature, 30min). Negative control was used by secondary antibody only.

Immunohistochemical analysis of paraffin-embedded Rat-kidney tissue. 1,IRS-1 Polyclonal Antibody was diluted at 1:200(4°C,overnight). 2, Sodium citrate pH 6.0 was used for antibody retrieval(>98°C,20min). 3,Secondary antibody was diluted at 1:200(room temperature, 30min). Negative control was used by secondary antibody only.



Immunohistochemical analysis of paraffin-embedded Mouse-brain tissue. 1,IRS-1 Polyclonal Antibody was diluted at 1:200(4°C,overnight). 2, Sodium citrate pH 6.0 was used for antibody retrieval(>98°C,20min). 3,Secondary antibody was diluted at 1:200(room temperature, 30min). Negative control was used by secondary antibody only.



Immunofluorescence analysis of mouse-lung tissue. 1,IRS-1 Polyclonal Antibody(red) was diluted at 1:200(4°C,overnight). 2, Cy3 labeled Secondary antibody was diluted at 1:300(room temperature, 50min).3, Picture B: DAPI(blue) 10min. Picture A:Target. Picture B: DAPI. Picture C: merge of A+B

Immunofluorescence analysis of human-lung tissue. 1,IRS-1 Polyclonal Antibody(red) was diluted at 1:200(4°C,overnight). 2, Cy3 labeled Secondary antibody was diluted at 1:300(room temperature, 50min).3, Picture A:Target. Picture B: DAPI(blue) 10min. Picture C: merge of A+B