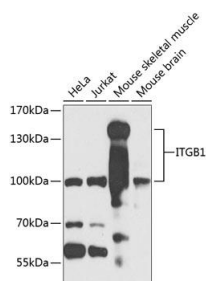


Cat. No:	AB-84115
Conjugate:	Unconjugated
Size:	100 ug
Clone:	POLY
Concentration:	1mg/ml
Host:	Rb
Isotype:	IgG
Immunogen:	A synthetic peptide corresponding to a sequence within amino acids 600-700 of human ITGB1
Reactivity:	Hu, Ms, Rt
Applications:	Western Blot: 1:500 - 1:2000 Immunohistochemistry: 1:50 -1:200 Immunofluorescence: 1:50 -1:200
Molecular Weight:	100-135kDa
Purification:	Aff. Pur.
Synonyms:	ITGB1; CD29; FNRB; GPIIA; MDF2; MSK12; VLA-BET A; VLAB; integrin beta-1
Background:	Integrins are heterodimeric proteins made up of alpha and beta subunits. At least 18 alpha and 8 beta subunits have been described in mammals. Integrin family members are membrane receptors involved in cell adhesion and recognition in a variety of processes including embryogenesis, hemostasis, tissue repair, immune response and metastatic diffusion of tumor cells. This gene encodes a beta subunit. Multiple alternatively spliced transcript variants which encode different protein isoforms have been found for this gene.
Form:	Liquid
Buffer:	PBS with 0.02% sodium azide, 50% glycerol, pH7.3.
Storage:	Store at -20°C. Avoid freeze / thaw cycles.



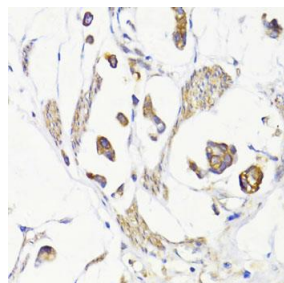
Western blot analysis of extracts of various cell lines, using ITGB1 antibody at 1:1000 dilution.

Secondary antibody: HRP Goat Anti-Rabbit IgG (H+L) at 1:10000 dilution.

Lysates/proteins: 25ug per lane.

Blocking buffer: 3% nonfat dry milk in TBST.

Detection: ECL West Pico Plus



Immunohistochemistry of paraffin-embedded human gastric cancer using ITGB1 antibody at dilution of 1:100 (40x lens).

Exposure time: 90s.

**For Research use only
IMMUNOLOGICAL SCIENCES**