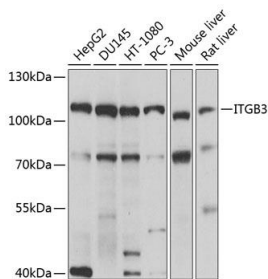


Cat. No:	AB-81992
Conjugate:	Unconjugated
Size:	100µg
Clone:	POLY
Concentration:	1mg/ml
Host:	Rb
Isotype:	IgG
Immunogen:	Recombinant fusion protein containing a sequence corresponding to amino acids 609-788 of human ITGB3
Reactivity:	Hu, Ms, Rt
Applications:	Western Blot: 1:1000
Molecular Weight:	112kDa
Purification:	Aff. Pur.
Synonyms:	ITGB3; BDPLT16; BDPLT2; CD61; GP3A; GPIIIa; GT; integrin beta-3
Background:	The ITGB3 protein product is the integrin beta chain beta 3. Integrins are integral cell surface proteins composed of an alpha chain and a beta chain. A given chain may combine with multiple partners resulting in different integrins. Integrin beta 3 is found along with the alpha IIb chain in platelets. Integrins are known to participate in cell adhesion as well as cell-surface mediated signaling.
Form:	Liquid
Buffer:	PBS with 0.02% sodium azide,0.05% BSA,50% glycerol, pH7.3
Storage:	Store at -20°C. Avoid freeze / thaw cycles.



Western blot analysis of extracts of various cell lines, using ITGB3 antibody at 1:1000 dilution.

Secondary antibody: HRP Goat Anti-Rabbit IgG (H+L) at 1:10000 dilution.

Lysates/proteins: 25ug per lane.

Blocking buffer: 3% nonfat dry milk in TBST.

Detection: ECL West Pico Plus.

Exposure time: 10s.

**For Research use only
IMMUNOLOGICAL SCIENCES**