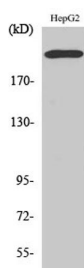
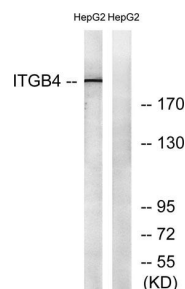


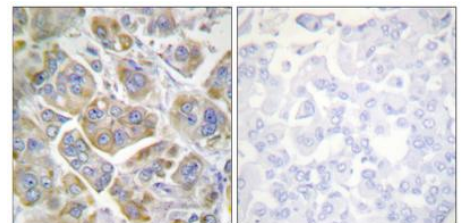
Cat. No:	AB-E9178
Conjugate:	Unconjugated
Size:	100 ug
Clone:	POLY
Concentration:	1mg/ml
Host:	Rabbit
Isotype:	IgG
Immunogen:	The antiserum was produced against synthesized peptide derived from human Integrin beta4. AA range:1481-1530
Reactivity:	Human;Mouse;Rat
Applications:	Western Blot: 1/500 - 1/2000. Immunohistochemistry: 1/100 - 1/300 Immunofluorescence: 1:200-1:1000
Molecular Weight:	202kDa
Purification:	The antibody was affinity-purified from rabbit antiserum by affinity-chromatography using epitope-specific immunogen.
Synonyms:	ITGB4; Integrin beta-4; GP150; CD antigen CD104
Background:	Integrins are heterodimers comprised of alpha and beta subunits, that are noncovalently associated transmembrane glycoprotein receptors. Different combinations of alpha and beta polypeptides form complexes that vary in their ligand-binding specificities. Integrins mediate cell-matrix or cell-cell adhesion, and transduced signals that regulate gene expression and cell growth. This gene encodes the integrin beta 4 subunit, a receptor for the laminins. This subunit tends to associate with alpha 6 subunit and is likely to play a pivotal role in the biology of invasive carcinoma. Mutations in this gene are associated with epidermolysis bullosa with pyloric atresia. Multiple alternatively spliced transcript variants encoding distinct isoforms have been found for this gene.
Form:	Liquid
Buffer:	Liquid in PBS containing 50% glycerol, 0.5% BSA and 0.02% sodium azide.
Storage:	Store at -20°C. Avoid repeated freeze-thaw cycles.



Western Blot analysis of various cells using Integrin β 4 Polyclonal Antibody



Western blot analysis of lysates from HepG2 cells, treated with PMA 125ng/ml 30', using Integrin beta4 Antibody. The lane on the right is blocked with the synthesized



Immunohistochemistry analysis of paraffin-embedded human breast carcinoma tissue, using Integrin beta4 Antibody. The picture on the right is blocked with the synthesized peptide.

peptide.

**For Research use only
IMMUNOLOGICAL SCIENCES**