

Cat. No: MAB-94634
Conjugate: Unconjugated
Size: 100 ug
Clone: MI1
Concentration: 1mg/ml
Host: Rabbit
Isotype: IgG

Immunogen: The antiserum was produced against synthesized peptide derived from the Internal region of human IL1B. AA range:181-230

Reactivity: Human, Mouse, Rat

Applications: Western Blot: 1:500 - 1:2000
 Immunofluorescence: 1:50 - 1:200
 Immunohistochemistry (paraffin-embedded tissues) 1:100-300

Molecular Weight: 17kDa

Purification: The antibody was affinity-purified from rabbit antiserum by affinity-chromatography using epitope-specific immunogen.

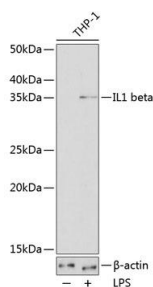
Synonyms: IL-1;IL1-BETA;IL1F2;IL1 beta;IL1B

Background: The protein encoded by this gene is a member of the interleukin 1 cytokine family. This cytokine is produced by activated macrophages as a proprotein, which is proteolytically processed to its active form by caspase 1 (CASP1/ICE). This cytokine is an important mediator of the inflammatory response, and is involved in a variety of cellular activities, including cell proliferation, differentiation, and apoptosis. The induction of cyclooxygenase-2 (PTGS2/COX2) by this cytokine in the central nervous system (CNS) is found to contribute to inflammatory pain hypersensitivity. This gene and eight other interleukin 1 family genes form a cytokine gene cluster on chromosome 2.

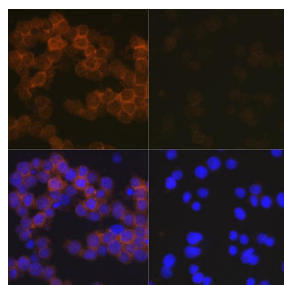
Form: Liquid

Buffer: Liquid in PBS containing 50% glycerol, 0.5% BSA and 0.02% sodium azide.

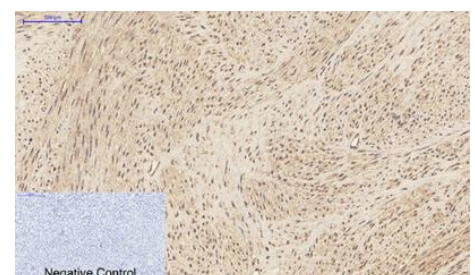
Storage: Store at -20°C. Avoid freeze / thaw cycles.



Western blot analysis of extracts of THP-1 cells, using IL1 beta antibody at 1:1000 dilution. THP-1 cells were treated by LPS (1 µg/mL) at 37°C for 8 hours. Secondary antibody: HRP Goat Anti-Rabbit IgG (H+L) at 1:10000 dilution.



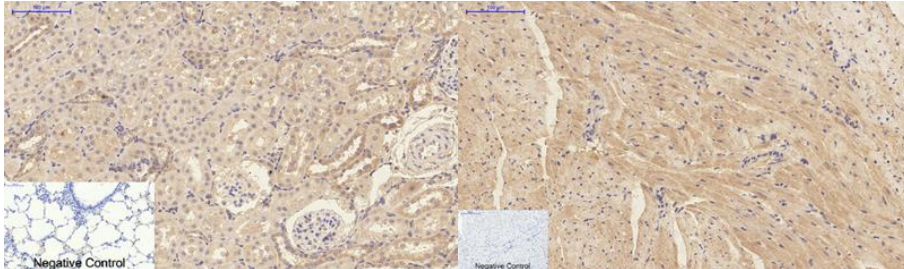
Immunofluorescence analysis of THP-1 cells using IL1 beta antibody. (THP-1 cells were treated by LPS (1 µg/mL) at 37°C for 8 hours. Blue: DAPI for nuclear staining.



Immunohistochemical analysis of paraffin-embedded Human-uterus tissue. 1, IL-1β Polyclonal Antibody was diluted at 1:200 (4°C, overnight). 2, Sodium citrate pH 6.0 was used for antibody retrieval (>98°C, 20min).

Lysates/proteins: 25ug per lane.
Blocking buffer: 3% nonfat dry milk in
TBST. Detection: ECL West Pico Plus.
Exposure time: 3min.

3,Secondary antibody was diluted at
1:200(room temperature, 30min).
Negative control was used by
secondary antibody only.



Immunohistochemical analysis of
paraffin-embedded Rat-lung tissue.
1,IL-1 β Polyclonal Antibody was diluted
at
1:200(4°C,overnight). 2, Sodium citrate
pH 6.0 was used for antibody
retrieval(>98°C,20min).
3,Secondary antibody was diluted at
1:200(room temperature).

Immunohistochemical analysis of
paraffin-embedded Mouse-heart tissue.
1,IL-1 β Polyclonal Antibody was diluted
at 1:200(4°C,overnight). 2, Sodium
citrate pH 6.0 was used for antibody
retrieval(>98°C,20min).3,Secondary
antibody was diluted at
1:200(roomtemperature, 30min).
Negative control was used by
secondary antibody only.