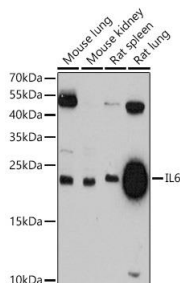
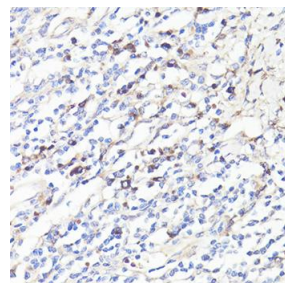


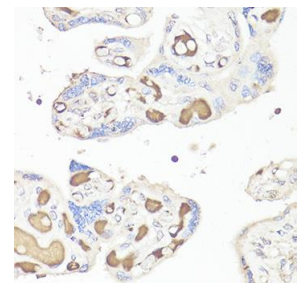
<b>Cat. No:</b>	AB-83767
<b>Conjugate:</b>	Unconjugated
<b>Size:</b>	100 ug
<b>Clone:</b>	POLY
<b>Concentration:</b>	1mg/ml
<b>Host:</b>	Rb
<b>Isotype:</b>	IgG
<b>Immunogen:</b>	Recombinant fusion protein containing a sequence corresponding to amino acids 30-212 of human IL6
<b>Reactivity:</b>	Hu,Ms, Rt
<b>Applications:</b>	Western Blot: 1:500 - 1:2000 Mmunohistochemistry: 1:50 - 1:200
<b>Molecular Weight:</b>	23kDa
<b>Purification:</b>	Aff.Pur.
<b>Synonyms:</b>	IL6;BSF-2;BSF2;CDF;HGF;HSF;IFN-beta-2;IFNB2;IL-6
<b>Background:</b>	This gene encodes a cytokine that functions in inflammation and the maturation of B cells. In addition, the encoded protein has been shown to be an endogenous pyrogen capable of inducing fever in people with autoimmune diseases or infections. The protein is primarily produced at sites of acute and chronic inflammation, where it is secreted into the serum and induces a transcriptional inflammatory response through interleukin 6 receptor, alpha. The functioning of this gene is implicated in a wide variety of inflammation-associated disease states, including susceptibility to diabetes mellitus and systemic juvenile rheumatoid arthritis. Alternative splicing results in multiple transcript variants.
<b>Form:</b>	Liquid
<b>Buffer:</b>	PBS with 0.02% sodium azide, 50% glycerol, pH7.
<b>Storage:</b>	Store at -20°C. Avoid freeze / thaw cycles.



Western blot analysis of extracts of various cell lines, using IL6 antibody at 1:3000 dilution. Secondary antibody: HRP Goat Anti-Rabbit IgG (H+L) at 1:10000 dilution.  
Lysates/proteins: 25ug per lane.  
Blocking buffer: 3% nonfat dry milk in TBST. Detection: ECL West Pico



Immunohistochemistry of paraffin embedded human tonsil using IL6 antibody at dilution of 1:100 (40xlens).



Immunohistochemistry of paraffinembedded human placenta using IL6 antibody at dilution of 1:100 (40xlens).

Plus.Exposure time: 90.

**For Research use only  
IMMUNOLOGICAL SCIENCES**