

Cat. No: MAB-94415
Size: 100 ug
Clone: POLY
Concentration: 1mg/ml
Host: Rb
Isotype: IgG
Immunogen: Recombinant protein of human KRAS
Reactivity: Hu, Ms, Rt

Applications: Western Blot: 1:500 -1:1000
 Immunohistochemistry: 1:50 -1:200
 Immunofluorescence: 1:50 -1:200
 Immunoprecipitation: 1:50 -1:200

Molecular Weight: 22kDa

Purification: Aff. Pur.

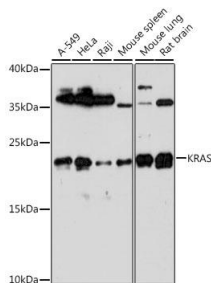
Synonyms: KRAS; C-K-RAS; CFC2; K-RAS2A; K-RAS2B; K-RAS4A; K-RAS4B; KI-RAS; KRAS1; KRAS2; NS; NS3; RALD; RASK2; c-Ki-ras2; GTPase Kras

Background: This gene, a Kirsten ras oncogene homolog from the mammalian ras gene family, encodes a protein that is a member of the small GTPase superfamily. A single amino acid substitution is responsible for an activating mutation. The transforming protein that results is implicated in various malignancies, including lung adenocarcinoma, mucinous adenoma, ductal carcinoma of the pancreas and colorectal carcinoma. Alternative splicing leads to variants encoding two isoforms that differ in the C-terminal region.

Form: Liquid

Buffer: PBS with 0.02% sodium azide, 50% glycerol, pH7.3.

Storage: Store at -20°C. Avoid freeze / thaw cycles



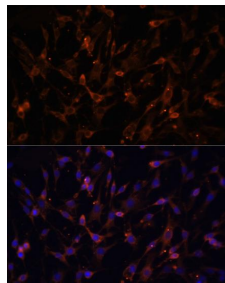
Western blot analysis of extracts of various cell lines, using KRAS antibody at 1:1000 dilution.

Secondary antibody: HRP Goat Anti-Rabbit IgG (H+L) at 1:10000 dilution.

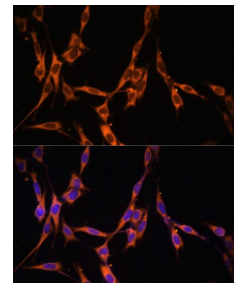
Lysates/proteins: 25ug per lane.

Blocking buffer: 3% nonfat dry milk in TBST.

Detection: ECL West Pico.



Immunofluorescence analysis of C6 cells using KRAS antibody at dilution of 1:100. Blue: DAPI for nuclear staining.



Immunofluorescence analysis of NIH/3T3 cells using KRAS antibody at dilution of 1:100. Blue: DAPI for nuclear staining.

Exposure time: 90s.

**For Research use only
IMMUNOLOGICAL SCIENCES**