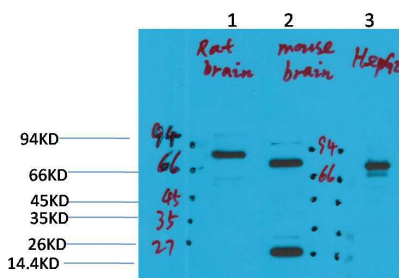
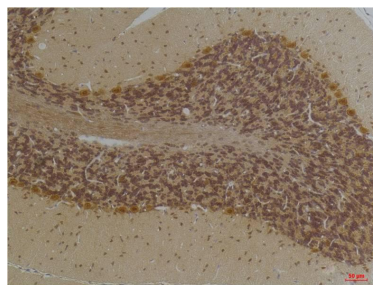


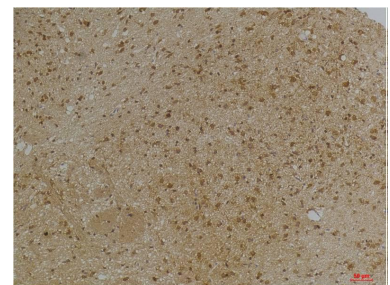
<b>Cat. No:</b>	AB-84400
<b>Size:</b>	100ug
<b>Clone:</b>	POLY
<b>Concentration:</b>	1mg/ml
<b>Host:</b>	Rb
<b>Isotype:</b>	IgG
<b>Immunogen:</b>	Synthetic Peptide
<b>Reactivity:</b>	Hu
<b>Applications:</b>	Western Blot: 1:1000-1: 2000 Immunohistochemistry: 1:100-1:200
<b>Molecular Weight:</b>	70,26kDa
<b>Purification:</b>	Aff. Pur.
<b>Synonyms:</b>	Kca2.2, hsk2, skca2
<b>Background:</b>	Forms a voltage-independent potassium channel activated by intracellular calcium. Activation is followed by membrane hyperpolarization.
<b>Form:</b>	Liquid
<b>Buffer:</b>	PBS with 0.02% sodium azide and 50% glycerol pH 7.4.
<b>Storage:</b>	Store at -20°C. Avoid freeze / thaw cycles.



Western blot analysis of  
1) Rat Brain Tissue,  
2) Mouse Brain Tissue,  
3) HepG2 with KCNN2(SK2) Rabbit pAb  
diluted at 1:2,000.



Immunohistochemical analysis of  
paraffin-embedded Human Brain Tissue  
using KCNN2(SK2) Rabbit pAb diluted at  
1:200.



Immunohistochemical analysis of  
paraffin-embedded Mouse Brain Tissue  
using KCNN2 (SK2) Rabbit pAb diluted at  
1:200.

**For Research use only  
IMMUNOLOGICAL SCIENCES**