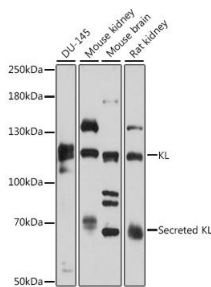
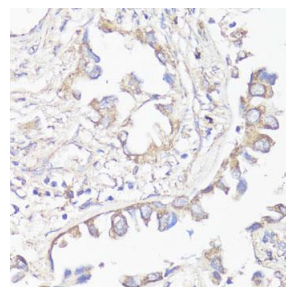


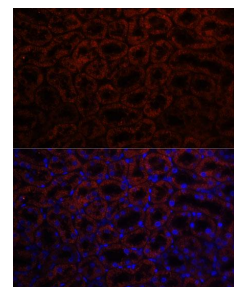
Cat. No:	AB-84310
Size:	100 ug
Clone:	POLY
Concentration:	1mg/ml
Host:	Rb
Isotype:	IgG
Immunogen:	Recombinant fusion protein containing a sequence corresponding to amino acids 1-200 of human KL
Reactivity:	Hu, Ms, Rt
Applications:	Western Blot: 1:500 - 1:2000 Immunohistochemistry: 1:50 - 1:200 Immunofluorescence: 1:50 - 1:200
Molecular Weight:	65kDa, 120kDa
Purification:	Aff. Pur.
Synonyms:	KL;klotho
Background:	This gene encodes a type-I membrane protein that is related to beta-glucosidases. Reduced production of this protein has been observed in patients with chronic renal failure (CRF), and this may be one of the factors underlying the degenerative processes (e.g., arteriosclerosis, osteoporosis, and skin atrophy) seen in CRF. Also, mutations within this protein have been associated with ageing and bone loss.
Form:	Liquid
Buffer:	PBS with 0.02% sodium azide,50% glycerol,pH7.3.
Storage:	Store at -20°C. Avoid freeze / thaw cycles.



Western blot analysis of extracts of various cell lines, using KL antibody at 1:3000 dilution.
Secondary antibody: HRP Goat Anti-Rabbit IgG (H+L) at 1:10000 dilution.
Lysates/proteins: 25ug per lane.
Blocking buffer: 3% nonfat dry milk in TBST.
Detection: ECL West Pico Plus.
Exposure time: 5s.



Immunohistochemistry of paraffin Embedded human lung cancer using KL antibody at dilution of 1:200 (40x lens).



Immunofluorescence analysis of rat kidney using KL antibody at dilution of 1:100.
Blue: DAPI for nuclear staining.

References

References for KL Rabbit Polyclonal Antibody

Product: KL Rabbit pAb

Journal:Journal of Molecular Medicine

Application:WB IF:4.686

Species:Mus musculus

PMID:29730698

Title: Klotho preservation by Rhein promotes toll-like receptor 4 proteolysis and attenuates lipopolysaccharide-induced acute kidney injury

**For Research use only
IMMUNOLOGICAL SCIENCES**