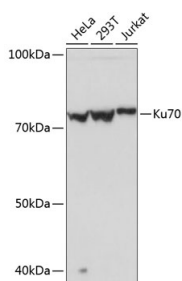
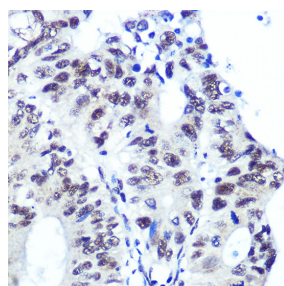


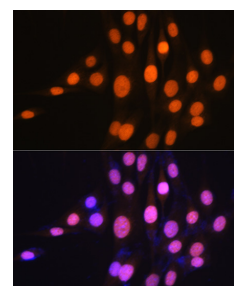
Cat. No:	MAB-94696
Conjugate:	Unconjugated
Size:	100 ug
Clone:	EPR4027
Concentration:	1mg/ml
Host:	Rb
Isotype:	IgG
Immunogen:	Immunogen A synthetic peptide corresponding to a sequence within amino acids 500-609 of human Ku70.
Reactivity:	Human, Mouse, Rat
Applications:	Western Blot: 1:500 - 1:2000 Immunohistochemistry: HC 1:50 - 1:200 Immunofluorescence: 1:50 - 1:200 Immunocytochemistry CC 1:50 - 1:200
Molecular Weight:	70KDa
Purification:	Aff. Pur.
Synonyms:	CTC75; CTCBF; G22P1; KU70; ML8; TLAA
Background:	The p70/p80 autoantigen is a nuclear complex consisting of two subunits with molecular masses of approximately 70 and 80 kDa. The complex functions as a single-stranded DNA-dependent ATP-dependent helicase. The complex may be involved in the repair of nonhomologous DNA ends such as that required for double-strand break repair, transposition, and V(D)J recombination. High levels of autoantibodies to p70 and p80 have been found in some patients with systemic lupus erythematosus.
Form:	Liquid
Buffer:	PBS with 0.01% thiomersal, 0.05% BSA, 50% glycerol, pH 7.3.
Storage:	Store at -20°C. Avoid freeze / thaw cycles.



Western blot analysis of extracts of various cell lines, using Ku70 Rabbit mAb at 1:1000 dilution.
Secondary antibody: HRP Goat Anti-Rabbit IgG (H+L) at 1:10000 dilution.
Lysates/proteins: 25ug per lane.
Blocking buffer: 3% nonfat dry milk in TBST.
Detection: ECL West Pico Plus



Immunofluorescence analysis of NIH-3T3 cells using Ku70 Rabbit mAb at dilution of 1:100 (40x lens). Blue: DAPI for nuclear staining.



Immunofluorescence analysis of NIH-3T3 cells using Ku70 Rabbit mAb at dilution of 1:100 (40x lens). Blue: DAPI for nuclear staining.

Exposure time: 1s.

**For Research use only
IMMUNOLOGICAL SCIENCES**