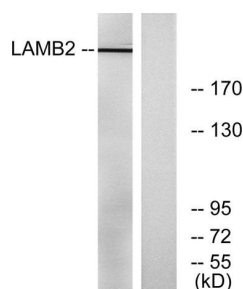
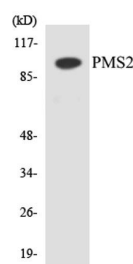


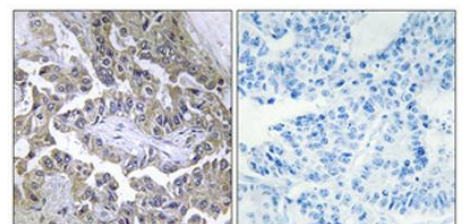
| | |
|--------------------------|--|
| Cat. No: | AB-E97720 |
| Conjugate: | unconjugated |
| Size: | 100 ug |
| Clone: | Polyclonal |
| Concentration: | 1mg/ml |
| Host: | Rabbit |
| Isotype: | IgG |
| Immunogen: | The antiserum was produced against synthesized peptide derived from human LAMB2. AA range:61-110 |
| Reactivity: | Human, Mouse, Rat |
| Applications: | Western Blot: 1/500 - 1/2000. Immunohistochemistry: 1/100 - 1/300. |
| Molecular Weight: | 210kD |
| Purification: | affinity purified |
| Synonyms: | LAMB2; LAMS; Laminin subunit beta-2; Laminin B1s chain; Laminin-11 subunit beta; Laminin-14 subunit beta; Laminin-15 subunit beta; Laminin-3 subunit beta; Laminin-4 subunit beta; Laminin-7 subunit beta; Laminin-9 subunit beta; S-laminin sub |
| Background: | Laminins, a family of extracellular matrix glycoproteins, are the major noncollagenous constituent of basement membranes. They have been implicated in a wide variety of biological processes including cell adhesion, differentiation, migration, signaling, neurite outgrowth and metastasis. Laminins, composed of 3 non identical chains: laminin alpha, beta and gamma (formerly A, B1, and B2, respectively), form a cruciform structure consisting of 3 short arms, each formed by a different chain, and a long arm composed of all 3 chains. Each laminin chain is a multidomain protein encoded by a distinct gene. Several isoforms of each chain have been described. Different alpha, beta and gamma chain isomers combine to give rise to different heterotrimeric laminin isoforms which are designated by Arabic numerals in the order of their discovery, i.e. alpha1beta1gamma1 heterotrimer is laminin 1. |
| Form: | Liquid |
| Buffer: | PBS containing 50% glycerol, 0.5% BSA and 0.02% sodium azide |
| Storage: | Store at -20°C. Avoid repeated freeze-thaw cycles. |



Western blot analysis of lysates from



Western blot analysis of the lysates from



Immunohistochemical analysis of paraffin-embedded Human lung cancer. Antibody was diluted at 1:100(4°)

RAW264.7 cells, using LAMB2 Antibody.
The lane on the right is blocked
with the synthesized peptide.

HUVECcells using PMS2 antibody.

overnight). High-pressure and
temperature Tris-EDTA,pH8.0 was used
for antigen retrieval. Negative contrl
(right) obtained from antibody was pre-
absorbe

**For Research use only
IMMUNOLOGICAL SCIENCES**